

GAS6 Polyclonal Antibody

Catalog number: 13795-1-AP

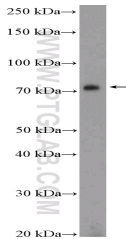
Size: 27 µg/150 µl

Source: Rabbit

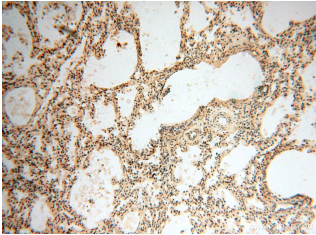
Isotype: IgG

Synonyms:

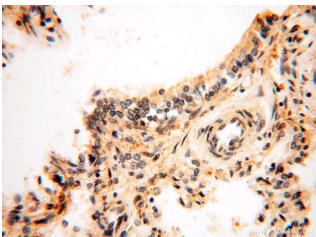
GAS6; AXLLG, AXSF,
DKFZp666G247, FLJ34709, GAS
6, GAS6, growth arrest 6



DU 145 cells were subjected to SDS PAGE followed by western blot with 13795-1-AP (GAS6 Antibody) at dilution of 1:600



Immunohistochemical of paraffin-embedded human lung using 13795-1-AP (GAS6 antibody) at dilution of 1:50 (under 10x lens)



Immunohistochemical of paraffin-embedded human lung using 13795-1-AP (GAS6 antibody) at dilution of 1:50 (under 40x lens)

Applications

Tested applications:	ELISA, IHC, WB
Species specificity:	Human; other species not tested.
Calculated GAS6 MW:	678aa, 75 kDa
Observed GAS6 MW:	75 kDa
Positive WB detected in	DU 145 cells
Positive IHC detected in	Human lung tissue, human ovary tissue
Recommended dilution:	WB: 1:200-1:2000 IHC: 1:20-1:200

Application key: WB = Western blotting, IHC = Immunohistochemistry, IF = Immunofluorescence, IP = Immunoprecipitation

Immunogen information

Immunogen:	Ag4617
GenBank accession number:	BC038984
Gene ID (NCBI):	2621
Full name:	Growth arrest-specific 6

Product information

Purification method:	Antigen affinity purification
Storage:	PBS with 0.02% sodium azide and 50% glycerol pH 7.3. Store at -20°C.