

## ARMC8 Polyclonal Antibody

Catalog number: 12653-1-AP

Size: 22 µg/150 µl

Source: Rabbit

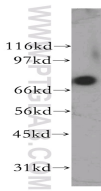
Isotype: IgG

Synonyms:

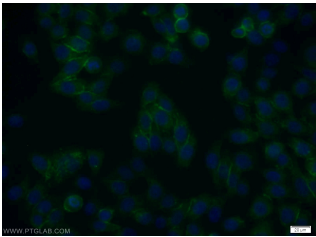
ARMC8; armadillo repeat

containing 8, ARMC8,

HSPC056, S863 2



MCF7 cells were subjected to SDS PAGE followed by western blot with 12653-1-AP (ARMC8 antibody) at dilution of 1:400



Immunofluorescent analysis of MCF-7 cells using 12653-1-AP (ARMC8 Antibody) at dilution of 1:25 and Alexa Fluor 488-conjugated AffiniPure Goat Anti-Rabbit IgG(H+L)

### Background

Armadillo repeat-containing protein 8 (Armc8) is a key factor to regulate cell membrane adhesion complex through promoting  $\alpha$ -catenin degradation. Armc8 expression was elevated during atypia-to-carcinoma progression and may be associated with cancer development of breast carcinoma (PMID: 25119601).

### Applications

Tested applications:	ELISA, WB, IF
Species specificity:	Human, Mouse, Rat; other species not tested.
Calculated ARMC8 MW:	673aa, 75.5 kDa
Observed ARMC8 MW:	75.5kd
Positive WB detected in	MCF7 cells, HeLa cells, HepG2 cells, mouse skeletal muscle tissue
Positive IF detected in	MCF-7 cells
Recommended dilution:	WB: 1:500-1:5000 IF: 1:10-1:100

Application key: WB = Western blotting, IHC = Immunohistochemistry, IF = Immunofluorescence, IP = Immunoprecipitation

### Immunogen information

Immunogen:	Ag3374
GenBank accession number:	BC013424
Gene ID (NCBI):	25852
Full name:	Armadillo repeat containing 8

### Product information

Purification method:	Antigen affinity purification
Storage:	PBS with 0.1% sodium azide and 50% glycerol pH 7.3. Store at -20°C.