

## IgG light chain (lambda) Polyclonal Antibody

Catalog number: 11541-1-AP

Size: 20 µg/150 µl

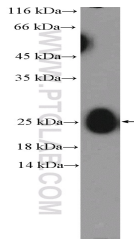
Source: Rabbit

Isotype: IgG

Synonyms:

IGL-; IGL, IGL-, immunoglobulin

lambda locus



human plasma (0.3 ug) tissue were subjected to SDS PAGE followed by western blot with 11541-1-AP( IgG light chain Antibody) at dilution of 1:1000

### Applications

|   |  |
|---|--|
| Tested applications:                    | ELISA, WB                                |
| Species specificity:                    | Human; other species not tested.         |
| Calculated IgG light chain (lambda) MW: | 237aa,25 kDa                             |
| Observed IgG light chain (lambda) MW:   | 25 kDa                                   |
| Positive WB detected in                 | Human plasma tissue, human spleen tissue |
| Recommended dilution:                   | WB: 1:500-1:5000                         |

Application key: WB = Western blotting, IHC = Immunohistochemistry, IF = Immunofluorescence, IP = Immunoprecipitation

### Immunogen information

|                           |                             |
|---------------------------|-----------------------------|
| Immunogen:                | Ag2064                      |
| GenBank accession number: | BC020233                    |
| Gene ID (NCBI):           | 3535                        |
| Full name:                | Immunoglobulin lambda locus |

### Product information

|                      |   |
|----------------------|---|
| Purification method: | Antigen affinity purification                                       |
| Storage:             | PBS with 0.1% sodium azide and 50% glycerol pH 7.3. Store at -20°C. |