

WBS15/LAT2 Polyclonal Antibody

Catalog number: 11008-1-AP

Size: 20 µg/150 µl

Source: Rabbit

Isotype: IgG

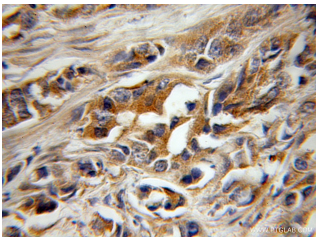
Synonyms:

LAT2; HSPC046, LAB, LAT2,

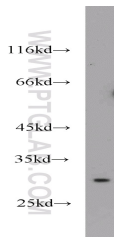
Non T cell activation linker,

NTAL, WBS15, WBSR15,

WBSR5, WSCR5



Immunohistochemical of paraffin-embedded human prostate cancer using 11008-1-AP (LAT2 antibody) at dilution of 1:50 (under 10x lens)



mouse brain tissue were subjected to SDS PAGE followed by western blot with 11008-1-AP (LAT2 antibody) at dilution of 1:500

Background

WBS15, also named as LAB, NTAL, WBSR15, WBSR5 and LAT2 (Linker for activation of T-cells family member 2; not SLC7A8/LAT2), is involved in FCER1 (high affinity immunoglobulin epsilon receptor)-mediated signaling in mast and myeloid cells. WBS15 is involved in BCR (B-cell antigen receptor)-mediated signaling in B-cells. It is located in the Williams-Beuren syndrome (WBS) critical region. WBS15 has two isoform with MW 27-30 kDa and 12 kDa.

Applications

Tested applications:	ELISA, WB, IHC
Species specificity:	Human, Mouse; other species not tested.
Calculated WBS15/LAT2 MW:	27kd
Observed WBS15/LAT2 MW:	27-30 kDa
Positive WB detected in	Mouse brain tissue, human brain tissue, human placenta tissue, Raji cells
Positive IHC detected in	Human prostate cancer tissue
Recommended dilution:	WB: 1:250 - 1:1000 IHC: 1:25 - 1:100

Application key: WB = Western blotting, IHC = Immunohistochemistry, IF = Immunofluorescence, IP = Immunoprecipitation

Immunogen information

Immunogen:	Ag1454
GenBank accession number:	BC009204
Gene ID (NCBI):	7462
Full name:	Linker for activation of T cells family, member 2

Product information

Purification method:	Antigen affinity purification
Storage:	PBS with 0.1% sodium azide and 50% glycerol pH 7.3. Store at -20°C.