

DDT Polyclonal Antibody

Catalog number: 12389-1-AP

Size: 30 µg/150 µl

Source: Rabbit

Isotype: IgG

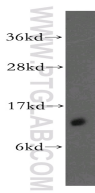
Synonyms:

DDT; D dopachrome

decarboxylase, D dopachrome

tautomerase, DDCT, DDT,

Phenylpyruvate tautomerase II



HeLa cells were subjected to SDS PAGE followed by western blot with 12389-1-AP (DDT antibody) at dilution of 1:500

Applications

Tested applications:	ELISA, WB
Species specificity:	Human, Mouse, Rat; other species not tested.
Calculated DDT MW:	118aa, 13 kDa
Observed DDT MW:	13 kDa
Positive WB detected in:	HeLa cells, rat liver tissue
Recommended dilution:	WB: 1:200-1:2000

Application key: WB = Western blotting, IHC = Immunohistochemistry, IF = Immunofluorescence, IP = Immunoprecipitation

Immunogen information

Immunogen:	Ag3065
GenBank accession number:	BC015508
Gene ID (NCBI):	1652
Full name:	D-dopachrome tautomerase

Product information

Purification method:	Antigen affinity purification
Storage:	PBS with 0.1% sodium azide and 50% glycerol pH 7.3. Store at -20°C.