

## BORIS Polyclonal Antibody

Catalog number: 11074-2-AP

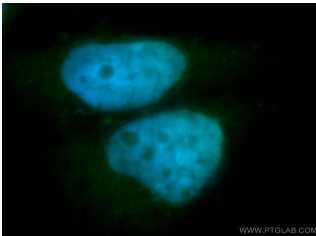
Size: 43 µg/150 µl

Source: Rabbit

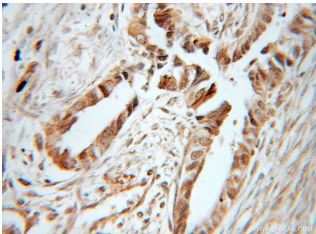
Isotype: IgG

Synonyms:

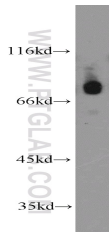
CTCFL; BORIS, Cancer/testis antigen 27, CCCTC binding factor, CT27, CTCF like protein, CTCF paralog, CTCF T, CTCFL, dJ579F20.2, Zinc finger protein CTCF T



Immunofluorescent analysis of SH-SY5Y cells, using CTCFL antibody 11074-2-AP at 1:50 dilution and FITC-labeled donkey anti-rabbit IgG (green). Blue pseudocolor = DAPI (fluorescent DNA dye).



Immunohistochemical of paraffin-embedded human ovary tumor using 11074-2-AP (BORIS antibody) at dilution of 1:50 (under 40x lens)



PC-3 cells were subjected to SDS PAGE followed by western blot with 11074-2-AP (BORIS antibody) at dilution of 1:1000

### Background

CTCF, also named BORIS (for brother of the regulator of imprinted sites) is a paralogue of the 11 zinc-finger transcription factor, CTCF. It is predominantly expressed in spermatocytes in the testis, also can be found in tumors and cancer cell lines. It mainly participates in insulator function, nuclear architecture and transcriptional control, which probably acts by recruiting epigenetic chromatin modifiers. It has a key role in gene imprinting in male germline, by participating in the establishment of differential methylation at the IGF2/H19 imprinted control region (ICR). Directly binds the unmethylated H19 ICR and recruits the PRMT7 methyltransferase, leading to methylate histone H4 'Arg-3' to form H4R3me2. Present polyclonal anti-CTCF antibody (11074-2-AP) is produced by immunizing animals with part of C-terminal chain of CTCFL and detect a 75-kDa band and a 55-kDa band.

### Applications

Tested applications:	ELISA, IHC, IF, WB
Species specificity:	Human, Mouse, Rat; other species not tested.
Calculated BORIS MW:	82 kDa, 75 kDa
Observed BORIS MW:	75 kDa
Positive WB detected in	PC-3 cells, HeLa cells, mouse testis tissue, rat testis tissue
Positive IHC detected in	Human ovary tumor tissue
Positive IF detected in	SH-SY5Y cells, HeLa cells
Recommended dilution:	WB: 1:500-1:5000 IHC: 1:20-1:200 IF: 1:20-1:200

Application key: WB = Western blotting, IHC = Immunohistochemistry, IF = Immunofluorescence, IP = Immunoprecipitation

### Immunogen information

Immunogen:	Ag1547
GenBank accession number:	BC130486
Gene ID (NCBI):	140690
Full name:	CCCTC-binding factor (zinc finger protein)-like

### Product information

Purification method:	Antigen affinity purification
Storage:	PBS with 0.1% sodium azide and 50% glycerol pH 7.3. Store at -20°C.