

SLCO6A1 Polyclonal Antibody

Catalog number: 11078-1-AP

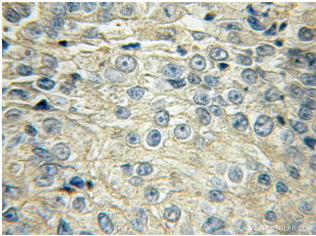
Size: 22 µg/150 µl

Source: Rabbit

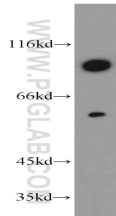
Isotype: IgG

Synonyms:

SLCO6A1; Cancer/testis antigen
48, CT48, Gonad specific
transporter, GST, OATP I,
OATP6A1, OATPY, SLC21A19,
SLCO6A1



Immunohistochemical of paraffin-embedded human lung cancer using 11078-1-AP(SLCO6A1 antibody) at dilution of 1:50 (under 10x lens)



Jurkat cells were subjected to SDS PAGE followed by western blot with 11078-1-AP(SLCO6A1 antibody) at dilution of 1:500

Applications

Tested applications:	ELISA, WB, IHC
Species specificity:	Human, Mouse; other species not tested.
Calculated SLCO6A1 MW:	719aa,79 kDa;657aa,73 kDa
Observed SLCO6A1 MW:	73-80 kDa,51 kDa
Positive WB detected in	Jurkat cells, HEK-293 cells, mouse brain tissue, mouse testis tissue
Positive IHC detected in	Human lung cancer tissue
Recommended dilution:	WB: 1:200-1:2000 IHC: 1:20-1:200

Application key: WB = Western blotting, IHC = Immunohistochemistry, IF = Immunofluorescence, IP = Immunoprecipitation

Immunogen information

Immunogen:	Ag1532
GenBank accession number:	BC034976
Gene ID (NCBI):	133482
Full name:	Solute carrier organic anion transporter family, member 6A1

Product information

Purification method:	Antigen affinity purification
Storage:	PBS with 0.1% sodium azide and 50% glycerol pH 7.3. Store at -20°C.