

CIB1 Polyclonal Antibody

Catalog number: 11823-1-AP

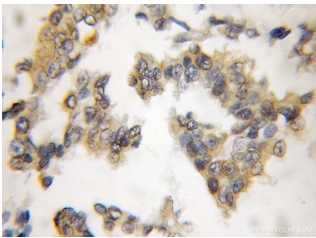
Size: 37 µg/150 µl

Source: Rabbit

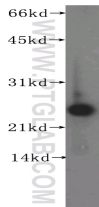
Isotype: IgG

Synonyms:

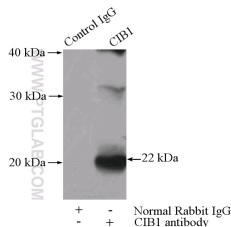
CIB1; Calmyrin, CIB, CIB1, CIBP,
DNA PKcs interacting protein,
Kinase interacting protein, KIP,
KIP1, PRKDCIP, SIP2 28, SNK
interacting protein 2 28



Immunohistochemical of paraffin-embedded human breast cancer using 11823-1-AP (CIB1 antibody) at dilution of 1:50 (under 10x lens)



human liver tissue were subjected to SDS PAGE followed by western blot with 11823-1-AP (CIB1 antibody) at dilution of 1:400



IP Result of anti-CIB1 (IP:11823-1-AP, 4µg; Detection:11823-1-AP 1:300) with mouse testis tissue lysate 4000µg.

Background

CIB1 (Calcium and integrin-binding protein 1) is also named as CIB, KIP, PRKDCIP. It is an EF-hand-containing protein that binds multiple effector proteins, including the platelet α IIb β 3 integrin and several serine/threonine kinases and potentially modulates their function. It regulates platelet aggregation in hemostasis through a specific interaction with the α IIb cytoplasmic domain of platelet integrin α IIb β 3.

Applications

Tested applications:	ELISA, WB, IHC, IP
Cited applications:	IF, WB
Species specificity:	Human, Mouse, Rat; other species not tested.
Cited species:	Human
Calculated CIB1 MW:	22 kDa
Observed CIB1 MW:	22 kDa
Positive WB detected in	Human liver tissue, HepG2 cells, rat testis tissue
Positive IP detected in	Mouse testis tissue
Positive IHC detected in	Human breast cancer tissue, human testis tissue, rat testis tissue
Recommended dilution:	WB: 1:500-1:5000 IP: 1:200-1:1000 IHC: 1:20-1:200

Application key: WB = Western blotting, IHC = Immunohistochemistry, IF = Immunofluorescence, IP = Immunoprecipitation

Immunogen information

Immunogen:	Ag2391
GenBank accession number:	BC000846
Gene ID (NCBI):	10519
Full name:	Calcium and integrin binding 1 (calmyrin)

Product information

Purification method:	Antigen affinity purification
Storage:	PBS with 0.1% sodium azide and 50% glycerol pH 7.3. Store at -20°C.