

SLC38A3 Polyclonal Antibody

Catalog number: 14315-1-AP

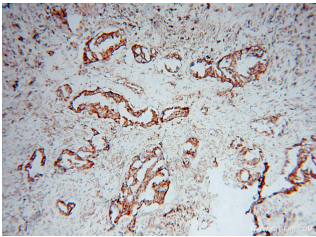
Size: 40 µg/150 µl

Source: Rabbit

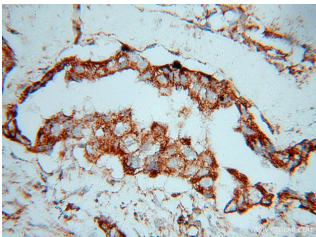
Isotype: IgG

Synonyms:

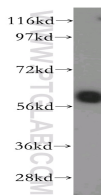
SLC38A3; G17, NAT1, SLC38A3, SN1, SNAT3



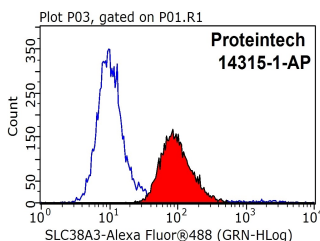
Immunohistochemical of paraffin-embedded human lung cancer using 14315-1-AP(SLC38A3 antibody) at dilution of 1:100 (under 10x lens)



Immunohistochemical of paraffin-embedded human lung cancer using 14315-1-AP(SLC38A3 antibody) at dilution of 1:100 (under 40x lens)



HeLa cells were subjected to SDS PAGE followed by western blot with 14315-1-AP(SLC38A3 antibody) at dilution of 1:400



1X10⁶ HeLa cells were stained with 0.2µg SLC38A3 antibody (14315-1-AP, red)

Background

SLC38A3, also known as SNAT3 or SN1, belongs to the SLC38 family of sodium-coupled neutral amino acid transporters. SLC38A3 mediates glutamine transport with sodium and proton coupled manner, and it contributes to ammonia metabolism in the liver and brain. SLC38A3 is highly expressed in the liver and brain astrocytes, with modest expression in the kidney, heart, and muscle. SLC38A3 may migrate higher than the predicted 56 kDa due to the glycosylation.

Applications

Tested applications:	ELISA, WB, IHC, FC, IP
Cited applications:	WB
Species specificity:	Human, Mouse, Rat; other species not tested.
Cited species:	Mouse
Calculated SLC38A3 MW:	504aa
Observed SLC38A3 MW:	65-70kd
Positive WB detected in	HeLa cells, BGC-823 cells, HEK-293 cells, human heart tissue, mouse brain tissue, mouse liver tissue, mouse pancreas tissue, Raji cells
Positive IP detected in	Mouse heart tissue
Positive IHC detected in	Human lung cancer tissue
Positive FC detected in	HeLa cells
Recommended dilution:	WB: 1:500-1:5000 IP: 1:500-1:5000 IHC: 1:20-1:200 FC: N/A

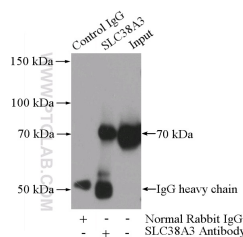
Application key: WB = Western blotting, IHC = Immunohistochemistry, IF = Immunofluorescence, IP = Immunoprecipitation

Immunogen information

Immunogen:	Ag5553
GenBank accession number:	BC042875
Gene ID (NCBI):	10991
Full name:	Solute carrier family 38, member 3

Product information

Purification method:	Antigen affinity purification
Storage:	PBS with 0.02% sodium azide and 50% glycerol pH 7.3. Store at -20°C.



IP Result of anti-SLC38A3 (IP:14315-1-AP, 3µg; Detection:14315-1-AP 1:1000)

and control antibody (blue). with mouse heart tissue lysate
Fixed with 90% MeOH 4000ug.
blocked with 3% BSA (30
min). Alexa Fluor 488-
conjugated AffiniPure Goat
Anti-Rabbit IgG(H+L) with
dilution 1:1000.