

Importin beta Polyclonal Antibody

Catalog number: 10077-1-AP

Size: 22 µg/150 µl

Source: Rabbit

Isotype: IgG

Synonyms:

KPNB1; IMB1, Impnb, Importin

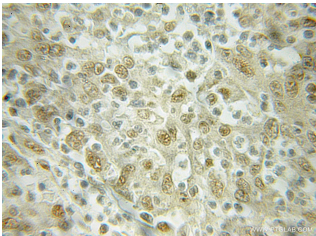
90, Importin subunit beta 1,

IPO1, IPOB, karyopherin

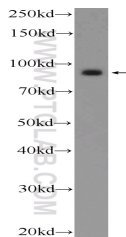
(importin) beta 1, Karyopherin

subunit beta 1, KPNB1, NTF97,

Nuclear factor p97, PTAC97



Immunohistochemical of paraffin-embedded human colon cancer using 10077-1-AP(KPNB1 antibody) at dilution of 1:50 (under 10x lens)



mouse brain tissue were subjected to SDS PAGE followed by western blot with 10077-1-AP(KPNB1 Antibody) at dilution of 1:600

Background

Importin beta1, also known karyopherin beta or KPNB1, is a nuclear transport receptor that plays a key role in the nuclear import process. Importin beta1 and importin alpha work in concert to transport cargo into the nucleus, functioning as an essential component of the classical nuclear localization signal (NLS) pathway. Elevated expression of importin beta1 has been found in cervical tumors. (22125623)

Applications

Tested applications:	ELISA, IHC, WB
Species specificity:	Human, Mouse, Rat; other species not tested.
Calculated Importin beta MW:	97 kDa
Observed Importin beta MW:	90-97 kDa
Positive WB detected in	Mouse brain tissue, A2780 cells, HeLa cells, HT-1080 cells, rat brain tissue
Positive IHC detected in	Human colon cancer tissue
Recommended dilution:	WB: 1:200-1:2000 IHC: 1:20-1:200

Application key: WB = Western blotting, IHC = Immunohistochemistry, IF = Immunofluorescence, IP = Immunoprecipitation

Immunogen information

Immunogen:	Ag0122
GenBank accession number:	BC003572
Gene ID (NCBI):	3837
Full name:	Karyopherin (importin) beta 1

Product information

Purification method:	Antigen affinity purification
Storage:	PBS with 0.1% sodium azide and 50% glycerol pH 7.3. Store at -20°C.