

ATG3 Polyclonal Antibody

Catalog number: 11262-2-AP

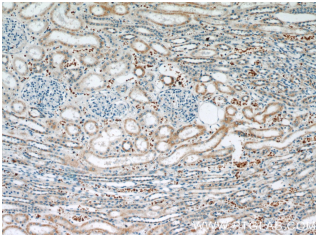
Size: 20 µg/150 µl

Source: Rabbit

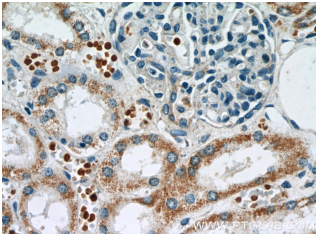
Isotype: IgG

Synonyms:

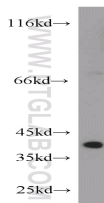
ATG3, APG3, APG3 LIKE,
APG3L, ATG3, Autophagy
related protein 3,
DKFZp564M1178, FLJ22125,
hApp3, PC3 96, Protein PC3 96



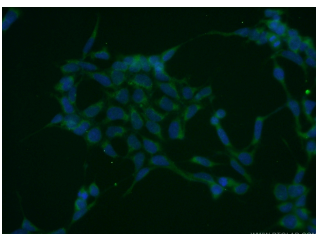
Immunohistochemistry of paraffin-embedded human kidney slide using 11262-2-AP (ATG3 Antibody) at dilution of 1:50



Immunohistochemistry of paraffin-embedded human kidney slide using 11262-2-AP (ATG3 Antibody) at dilution of 1:50



mouse kidney tissue were subjected to SDS PAGE followed by western blot with 11262-2-AP(ATG3 antibody) at dilution of 1:300



Applications

Tested applications:	ELISA, WB, IHC, IF
Species specificity:	Human, Mouse, Rat; other species not tested.
Calculated ATG3 MW:	36 kDa
Observed ATG3 MW:	36-40 kDa
Positive WB detected in	Mouse kidney tissue
Positive IHC detected in	Human kidney tissue
Positive IF detected in	HEK-293 cells
Recommended dilution:	WB: 1:200-1:2000
	IHC: 1:20-1:200
	IF: 1:20-1:200

Application key: WB = Western blotting, IHC = Immunohistochemistry, IF = Immunofluorescence, IP = Immunoprecipitation

Immunogen information

Immunogen:	Ag1785
GenBank accession number:	BC024221
Gene ID (NCBI):	64422
Full name:	ATG3 autophagy related 3 homolog (<i>S. cerevisiae</i>)

Product information

Purification method:	Antigen affinity purification
Storage:	PBS with 0.1% sodium azide and 50% glycerol pH 7.3. Store at -20°C.

**Immunofluorescent analysis
of HEK-293 cells using 11262-
2-AP(ATG3 Antibody) at
dilution of 1:50 and Alexa
Fluor 488-conjugated
AffiniPure Goat Anti-Rabbit
IgG(H+L)**