

## GNPDA1 Polyclonal Antibody

Catalog number: 12312-1-AP

Size: 27 µg/150 µl

Source: Rabbit

Isotype: IgG

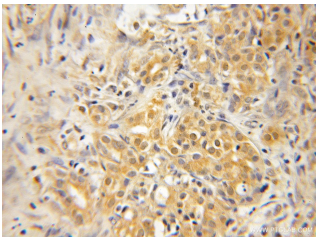
Synonyms:

GNPDA1; GlcN6P deaminase 1,

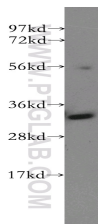
GNPDA, GNPDA 1, GNPDA1,

GNPI, GPI, HLN, KIAA0060,

Oscillin



Immunohistochemical of paraffin-embedded human pancreas cancer using 12312-1-AP (GNPDA1 antibody) at dilution of 1:50 (under 10x lens)



K-562 cells were subjected to SDS PAGE followed by western blot with 12312-1-AP (GNPDA1 antibody) at dilution of 1:400

### Background

GNPDA1 (glucosamine-6-phosphate isomerase 1) is also named as GNPI, HLN, KIAA0060 and belongs to the glucosamine/galactosamine-6-phosphate isomerase family. It catalyzes the reversible conversion of D-glucosamine-6-phosphate (GlcN6P) into D-fructose-6-phosphate (Fru6P) and ammonium (PMID:12965206). It may be playing an essential role for egg activation and early embryo development. GNPI is expressed as a 33-kD cytosolic protein in various cell lines (PMID: 9714720).

### Applications

Tested applications:	ELISA, WB, IHC
Species specificity:	Human, Mouse, Rat; other species not tested.
Calculated GNPDA1 MW:	289aa, 33 kDa
Observed GNPDA1 MW:	33 kDa
Positive WB detected in	K-562 cells, HeLa cells, human brain tissue, rat kidney tissue
Positive IHC detected in	Human pancreas cancer tissue
Recommended dilution:	WB: 1:500-1:5000 IHC: 1:20-1:200

Application key: WB = Western blotting, IHC = Immunohistochemistry, IF = Immunofluorescence, IP = Immunoprecipitation

### Immunogen information

Immunogen:	Ag2961
GenBank accession number:	BC012853
Gene ID (NCBI):	10007
Full name:	Glucosamine-6-phosphate deaminase 1

### Product information

Purification method:	Antigen affinity purification
Storage:	PBS with 0.1% sodium azide and 50% glycerol pH 7.3. Store at -20°C.