

Syntaphilin Polyclonal Antibody

Catalog number: 13646-1-AP

Size: 79 µg/150 µl

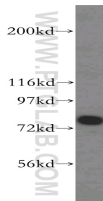
Source: Rabbit

Isotype: IgG

Synonyms:

SNPH; bA314N13.5, KIAA0374,

SNPH, syntaphilin



mouse trachea tissue were subjected to SDS PAGE followed by western blot with 13646-1-AP(SNPH antibody) at dilution of 1:800

Applications

Tested applications:	ELISA, WB
Species specificity:	Human,Mouse,Rat; other species not tested.
Calculated Syntaphilin MW:	538aa,58kd
Observed Syntaphilin MW:	75kd
Positive WB detected in	Mouse trachea tissue
Recommended dilution:	WB: 1:500-1:5000

Application key: WB = Western blotting, IHC = Immunohistochemistry, IF = Immunofluorescence, IP = Immunoprecipitation

Immunogen information

Immunogen:	Ag4594
GenBank accession number:	BC035788
Gene ID (NCBI):	9751
Full name:	Syntaphilin

Product information

Purification method:	Antigen affinity purification
Storage:	PBS with 0.02% sodium azide and 50% glycerol pH 7.3. Store at -20°C.