

## SRRM1 Polyclonal Antibody

Catalog number: 12822-1-AP

Size: 45 µg/150 µl

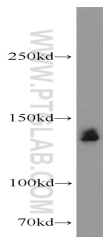
Source: Rabbit

Isotype: IgG

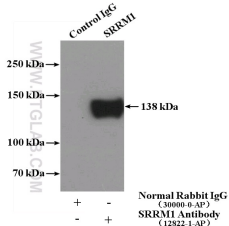
Synonyms:

SRRM1; 160 KD, POP101,

SRM160, SRRM1



mouse liver tissue were subjected to SDS PAGE followed by western blot with 12822-1-AP(SRRM1 antibody) at dilution of 1:500



IP Result of anti-SRRM1 (IP:12822-1-AP, 4µg; Detection:12822-1-AP 1:300) with HeLa cells lysate 3200µg.

### Background

SRRM1, also named as SRM160 and POP101, contains one PWI domain and belongs to the splicing factor SR family. As part of pre- and post-splicing multiprotein mRNP complexes, SRRM1 is involved in numerous pre-mRNA processing events. It promotes constitutive and exonic splicing enhancer (ESE)-dependent splicing activation by bridging together sequence-specific (SR family proteins, SFRS4, SFRS5 and TRA2B/SFRS10) and basal snRNP (SNRP70 and SNRPA1) factors of the spliceosome. SRRM1 stimulates mRNA 3'-end cleavage independently of the formation of an exon junction complex. It binds both pre-mRNA and spliced mRNA 20-25 nt upstream of exon-exon junctions. SRRM1 binds RNA and DNA with low sequence specificity and has similar preference for either double- or single-stranded nucleic acid substrates. SRRM1, a protein of high molecular weight(120-160kd), has a heavy glycosylation level and is normally highly phosphorylated. This antibody is a rabbit polyclonal antibody raised against residues near the N terminus of human SRRM1.

### Applications

Tested applications:	ELISA, WB, IP
Cited applications:	WB
Species specificity:	Human, Mouse, Rat; other species not tested.
Cited species:	Human
Calculated SRRM1 MW:	904aa, 102 kDa
Observed SRRM1 MW:	120-160 kDa
Positive WB detected in	Mouse liver tissue, HeLa cells, Jurkat cells, UV treated HEK-293 cells
Positive IP detected in	HeLa cells
Recommended dilution:	WB: 1:200-1:2000 IP: 1:200-1:1000

Application key: WB = Western blotting, IHC = Immunohistochemistry, IF = Immunofluorescence, IP = Immunoprecipitation

### Immunogen information

Immunogen:	Ag3513
GenBank accession number:	BC036187
Gene ID (NCBI):	10250
Full name:	Serine/arginine repetitive matrix 1

### Product information

Purification method:	Antigen affinity purification
Storage:	PBS with 0.02% sodium azide and 50% glycerol pH 7.3. Store at -20°C.