

## PIGB Polyclonal Antibody

Catalog number: 12612-1-AP

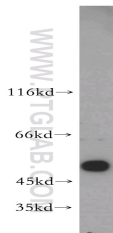
Size: 37 µg/150 µl

Source: Rabbit

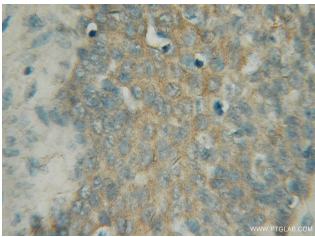
Isotype: IgG

Synonyms:

PIGB; MGC21236



human liver tissue were subjected to SDS PAGE followed by western blot with 12612-1-AP(PIGB Antibody) at dilution of 1:1500



Immunohistochemistry of paraffin-embedded human prostate cancer using 12612-1-AP(PIGB Antibody) at Dilution 1:50 (under 10x lens)

### Applications

<b>Tested applications:</b>	ELISA, WB, IHC
<b>Cited applications:</b>	WB
<b>Species specificity:</b>	Human, mouse, rat; other species not tested.
<b>Cited species:</b>	Human
<b>Positive WB detected in:</b>	Human liver tissue, human brain tissue, mouse testis tissue, Raji cells
<b>Calculated PIGB MW:</b>	554aa
<b>Observed PIGB MW:</b>	50-55kd
<b>Positive IHC detected in:</b>	Human prostate cancer
<b>Recommended dilution:</b>	WB: 1:500-1:5000 IHC: 1:20-1:200

Application key: WB = Western blotting, IHC = Immunohistochemistry, IF = Immunofluorescence, IP = Immunoprecipitation, FC = Flow cytometry

### Immunogen information

<b>Immunogen:</b>	Ag3244
<b>GenBank accession number:</b>	BC017711
<b>Gene ID (NCBI):</b>	9488
<b>Full name:</b>	Phosphatidylinositol glycan anchor biosynthesis, class B

### Product information

<b>Purification method:</b>	Antigen affinity purification
<b>Storage:</b>	PBS with 0.02% sodium azide and 50% glycerol pH 7.3. Store at -20°C.