

PSMA3 Polyclonal Antibody

Catalog number: 11887-1-AP

Size: 20 µg/150 µl

Source: Rabbit

Isotype: IgG

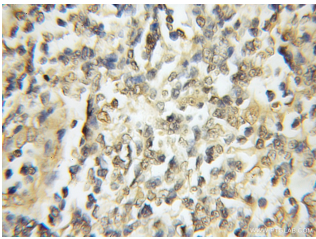
Synonyms:

PSMA3; 20S proteasome, HC8,

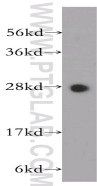
Macropain subunit C8,

Proteasome component C8,

PSC3, PSC8, PSMA3



Immunohistochemical of paraffin-embedded human lymphoma using 11887-1-AP (PSMA3 antibody) at dilution of 1:50 (under 10x lens)



human lung tissue were subjected to SDS PAGE followed by western blot with 11887-1-AP (PSMA3 antibody) at dilution of 1:400

Background

PSMA3 (Proteasome subunit alpha type-3) is also named as HC8, PSC8 and belongs to the peptidase T1A family. The proteasome is a multicatalytic protease complex that catalyzes an energy-dependent, extralysosomal proteolytic pathway responsible for selective elimination of proteins with aberrant structures and naturally occurring short-lived proteins related to metabolic regulation and cell cycle progression. It has 2 isoforms produced by alternative splicing.

Applications

| | |
|--------------------------|--|
| Tested applications: | ELISA, WB, IHC |
| Species specificity: | Human, Mouse, Rat; other species not tested. |
| Calculated PSMA3 MW: | 255aa, 28 kDa |
| Observed PSMA3 MW: | 28 kDa |
| Positive WB detected in | Human lung tissue, HeLa cells, NIH/3T3 cells |
| Positive IHC detected in | Human lymphoma tissue |
| Recommended dilution: | WB: 1:200-1:2000 IHC: 1:20-1:200 |

Application key: WB = Western blotting, IHC = Immunohistochemistry, IF = Immunofluorescence, IP = Immunoprecipitation

Immunogen information

| | |
|---------------------------|--|
| Immunogen: | Ag2495 |
| GenBank accession number: | BC029402 |
| Gene ID (NCBI): | 5684 |
| Full name: | Proteasome (prosome, macropain) subunit, alpha type, 3 |

Product information

| | |
|----------------------|---|
| Purification method: | Antigen affinity purification |
| Storage: | PBS with 0.1% sodium azide and 50% glycerol pH 7.3. Store at -20°C. |