

SPIN2B Polyclonal Antibody

Catalog number: 10107-2-AP

Size: 37 µg/150 µl

Source: Rabbit

Isotype: IgG

Synonyms:

SPIN2B; dJ323P24.2, SPIN 2,

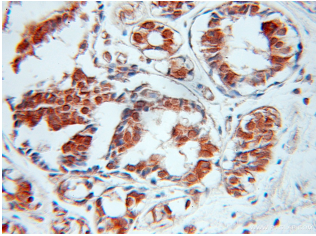
SPIN 2B, SPIN2,

SPIN2_duplicate, SPIN2B,

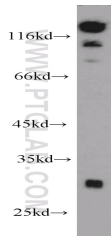
Spindlin 2B, spindlin family,

member 2B, Spindlin like

protein 2B



Immunohistochemical of paraffin-embedded human breast cancer using 10107-2-AP (SPIN2B antibody) at dilution of 1:50 (under 25x lens)



mouse brain tissue were subjected to SDS PAGE followed by western blot with 10107-2-AP (SPIN2B antibody) at dilution of 1:500

Applications

Tested applications:	ELISA, WB, IHC
Species specificity:	Human, Mouse, Rat; other species not tested.
Calculated SPIN2B MW:	29 kDa
Observed SPIN2B MW:	29 kDa
Positive WB detected in:	Mouse brain tissue
Positive IHC detected in:	Human breast cancer tissue
Recommended dilution:	WB: 1:200-1:2000 IHC: 1:20-1:200

Application key: WB = Western blotting, IHC = Immunohistochemistry, IF = Immunofluorescence, IP = Immunoprecipitation

Immunogen information

Immunogen:	Ag0157
GenBank accession number:	BC000044
Gene ID (NCBI):	474343
Full name:	Spindlin family, member 2B

Product information

Purification method:	Antigen affinity purification
Storage:	PBS with 0.1% sodium azide and 50% glycerol pH 7.3. Store at -20°C.