

SETDB2 Polyclonal Antibody

Catalog number: 14428-1-AP

Size: 35 µg/150 µl

Source: Rabbit

Isotype: IgG

Synonyms:

SETDB2; C13orf4, CLLD8,

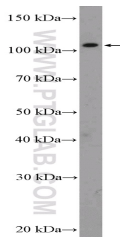
CLLL8, DKFZp586I0123,

DKFZp761J1217, KMT1F, Lysine

N methyltransferase 1F, SET

domain bifurcated 2, SET

domain, bifurcated 2, SETDB2



Jurkat cells were subjected to SDS PAGE followed by western blot with 14428-1-AP (SETDB2 Antibody) at dilution of 1:300

Applications

Tested applications:	ELISA, WB
Species specificity:	Human; other species not tested.
Calculated SETDB2 MW:	82 kDa
Observed SETDB2 MW:	101 kDa
Positive WB detected in	Jurkat cells
Recommended dilution:	WB: 1:200-1:1000

Application key: WB = Western blotting, IHC = Immunohistochemistry, IF = Immunofluorescence, IP = Immunoprecipitation

Immunogen information

Immunogen:	Ag5795
GenBank accession number:	BC047434
Gene ID (NCBI):	83852
Full name:	SET domain, bifurcated 2

Product information

Purification method:	Antigen affinity purification
Storage:	PBS with 0.1% sodium azide and 50% glycerol pH 7.3. Store at -20°C.