

PPP1CC Polyclonal Antibody

Catalog number: 11082-1-AP

Size: 20 µg/150 µl

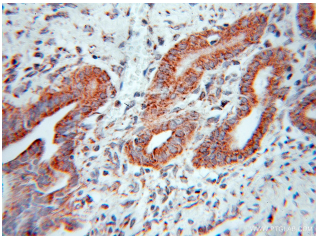
Source: Rabbit

Isotype: IgG

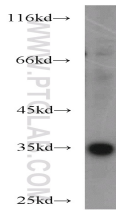
Synonyms:

PPP1CC; PP1 Gamma, PP 1G,

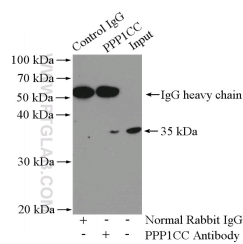
PPP1CC, PPP1G



Immunohistochemical of paraffin-embedded human pancreas cancer using 11082-1-AP (PPP1CC antibody) at dilution of 1:100 (under 10x lens)



MCF7 cells were subjected to SDS PAGE followed by western blot with 11082-1-AP (PPP1CC antibody) at dilution of 1:300



IP Result of anti-PPP1CC (IP:11082-1-AP, 4ug; Detection:11082-1-AP 1:500) with HEK-293 cells lysate 2000ug.

Background

PPP1CC, also named as PP-1G, belongs to the PPP phosphatase family and PP-1 subfamily. Protein phosphatase 1 (PP1) is essential for cell division, and participates in the regulation of glycogen metabolism, muscle contractility and protein synthesis. It is involved in regulation of ionic conductances and long-term synaptic plasticity. PPP1CC may play an important role in dephosphorylating substrates such as the postsynaptic density-associated Ca²⁺/calmodulin dependent protein kinase II.

Applications

Tested applications:	ELISA, WB, IHC, IP
Cited applications:	IP, WB
Species specificity:	Human, Mouse, Rat; other species not tested.
Cited species:	Human, rat
Calculated PPP1CC MW:	35 kDa
Observed PPP1CC MW:	35 kDa
Positive WB detected in	MCF7 cells, HEK-293 cells, HEK-293T cells, L02 cells, mouse brain tissue
Positive IP detected in	HEK-293 cells
Positive IHC detected in	Human pancreas cancer tissue
Recommended dilution:	WB: 1:200-1:2000
	IP: 1:200-1:2000
	IHC: 1:20-1:200

Application key: WB = Western blotting, IHC = Immunohistochemistry, IF = Immunofluorescence, IP = Immunoprecipitation

Immunogen information

Immunogen:	Ag1550
GenBank accession number:	BC014073
Gene ID (NCBI):	5501
Full name:	Protein phosphatase 1, catalytic subunit, gamma isoform

Product information

Purification method:	Antigen affinity purification
Storage:	PBS with 0.1% sodium azide and 50% glycerol pH 7.3. Store at -20°C.