

EXTL2 Polyclonal Antibody

Catalog number: 12828-1-AP

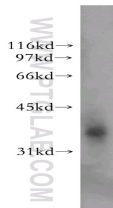
Size: 60 µg/150 µl

Source: Rabbit

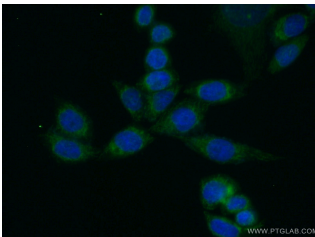
Isotype: IgG

Synonyms:

EXTL2; Alpha GalNAcT EXTL2, exostoses (multiple) like 2, Exostosin like 2, EXT related protein 2, EXTL2, EXTR2



HeLa cells were subjected to SDS PAGE followed by western blot with 12828-1-AP(EXTL2 antibody) at dilution of 1:400



Immunofluorescent analysis of (10% Formaldehyde) fixed HeLa cells using 12828-1-AP(EXTL2 Antibody) at dilution of 1:50 and Alexa Fluor 488-conjugated AffiniPure Goat Anti-Rabbit IgG(H+L)

Applications

Tested applications:	ELISA, WB, IF
Species specificity:	Human,Mouse,Rat; other species not tested.
Calculated EXTL2 MW:	330aa,37 kDa
Observed EXTL2 MW:	37 kDa
Positive WB detected in	HeLa cells
Positive IF detected in	HeLa cells
Recommended dilution:	WB: 1:500-1:5000 IF: 1:20-1:200

Application key: WB = Western blotting, IHC = Immunohistochemistry, IF = Immunofluorescence, IP = Immunoprecipitation

Immunogen information

Immunogen:	Ag3548
GenBank accession number:	BC036015
Gene ID (NCBI):	2135
Full name:	Exostoses (multiple)-like 2

Product information

Purification method:	Antigen affinity purification
Storage:	PBS with 0.1% sodium azide and 50% glycerol pH 7.3. Store at -20°C.