

MEA1 Polyclonal Antibody

Catalog number: 10267-1-AP

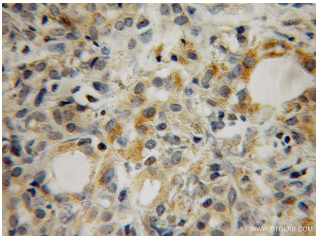
Size: 27 µg/150 µl

Source: Rabbit

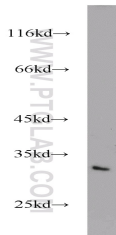
Isotype: IgG

Synonyms:

MEA1; HYS, male enhanced antigen 1, MEA, MEA 1, MEA1



Immunohistochemical of paraffin-embedded human pancreas cancer using 10267-1-AP (MEA1 antibody) at dilution of 1:50 (under 40x lens)



Jurkat cells were subjected to SDS PAGE followed by western blot with 10267-1-AP (MEA1 antibody) at dilution of 1:500

Applications

Tested applications:	ELISA, WB, IHC
Species specificity:	Human, Mouse, Rat; other species not tested.
Calculated MEA1 MW:	20 kDa
Observed MEA1 MW:	34kd and 36kd
Positive WB detected in	Jurkat cells, mouse testis tissue
Positive IHC detected in	Human pancreas cancer tissue
Recommended dilution:	WB: 1:200-1:2000 IHC: 1:20-1:200

Application key: WB = Western blotting, IHC = Immunohistochemistry, IF = Immunofluorescence, IP = Immunoprecipitation

Immunogen information

Immunogen:	Ag0375
GenBank accession number:	BC001754
Gene ID (NCBI):	4201
Full name:	Male-enhanced antigen 1

Product information

Purification method:	Antigen affinity purification
Storage:	PBS with 0.1% sodium azide and 50% glycerol pH 7.3. Store at -20°C.