

SIX1 Polyclonal Antibody

Catalog number: 10709-1-AP

Size: 45 µg/150 µl

Source: Rabbit

Isotype: IgG

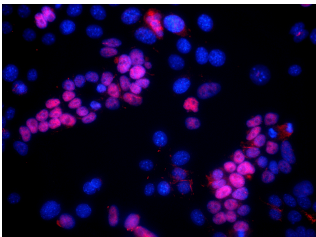
Synonyms:

SIX1; BOS3, DFNA23,

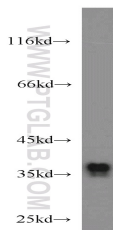
Homeobox protein SIX1, Sine

oculis homeobox homolog 1,

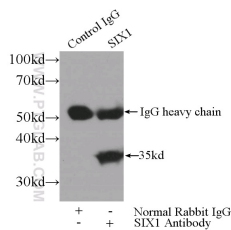
SIX homeobox 1, SIX1, TIP39



IF result of anti-SIX1(1:50) in p53-/- mammary epithelial tumor cells. Blue: hoechst nuclear stain, Red: SIX1 stain the mesenchymal cell which have undergone EMT.



A2780 cells were subjected to SDS PAGE followed by western blot with 10709-1-AP(SIX1 antibody) at dilution of 1:800



IP Result of anti-SIX1 (IP:10709-1-AP, 3µg; Detection:10709-1-AP 1:1000) with HEK-293 cells lysate 2560µg.

Background

SIX1 belongs to SIX family that contains a divergent DNA-binding homeodomain and an upstream SIX domain, which may participate both in determining DNA-binding specificity and in mediating protein-protein interactions. It may be involved in limb tendon and ligament development, and specifically expressed in skeletal muscle. SIX1 plays a essential role in the development of numerous organs and shows littl to no expression in most non-neoplastic adult tissue, yet is overexpression in a number of meoplasms where it increases cell proliferation and survival.

Applications

Tested applications:	ELISA, WB, IF, IP
Cited applications:	IHC, WB
Species specificity:	Human, Mouse; other species not tested.
Cited species:	Human, mouse
Calculated SIX1 MW:	32 kDa
Observed SIX1 MW:	32-40 kDa
Positive WB detected in	A2780 cells, HEK-293 cells, HepG2 cells, L02 cells, PC-3 cells, SKOV-3 cells
Positive IP detected in	HEK-293 cells
Positive IF detected in	Epithelial tumor cells
Recommended dilution:	WB: 1:200-1:2000 IP: 1:500-1:5000 IF: 1:20-1:200

Application key: WB = Western blotting, IHC = Immunohistochemistry, IF = Immunofluorescence, IP = Immunoprecipitation

Immunogen information

Immunogen:	Ag1044
GenBank accession number:	BC008874
Gene ID (NCBI):	6495
Full name:	SIX homeobox 1

Product information

Purification method:	Antigen affinity purification
Storage:	PBS with 0.1% sodium azide and 50% glycerol pH 7.3. Store at -20°C.