

## Cdc20 Polyclonal Antibody

Catalog number: 10252-1-AP

Size: 49 µg/150 µl

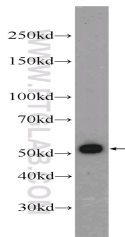
Source: Rabbit

Isotype: IgG

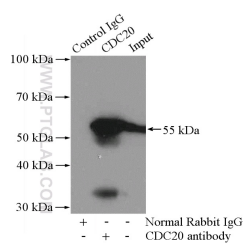
Synonyms:

CDC20; bA276H19.3, CDC20,

CDC20A, p55CDC



Jurkat cells were subjected to SDS PAGE followed by western blot with 10252-1-AP (CDC20 Antibody) at dilution of 1:800



IP Result of anti-CDC20 (IP:10252-1-AP, 4µg; Detection:10252-1-AP 1:800) with Jurkat cells lysate 3200µg.

### Applications

Tested applications:	ELISA, WB, IP
Cited applications:	WB
Species specificity:	Human, Mouse, Rat; other species not tested.
Cited species:	Human, mouse
Calculated Cdc20 MW:	499aa, 55 kDa
Observed Cdc20 MW:	55 kDa
Positive WB detected in	Jurkat cells, HEK-293 cells, HL-60 cells, PC-3 cells
Positive IP detected in	Jurkat cells
Recommended dilution:	WB: 1:200-1:2000 IP: 1:200-1:2000

Application key: WB = Western blotting, IHC = Immunohistochemistry, IF = Immunofluorescence, IP = Immunoprecipitation

### Immunogen information

Immunogen:	Ag0295
GenBank accession number:	BC001088
Gene ID (NCBI):	991
Full name:	Cell division cycle 20 homolog (S. cerevisiae)

### Product information

Purification method:	Antigen affinity purification
Storage:	PBS with 0.1% sodium azide and 50% glycerol pH 7.3. Store at -20°C.