

RPH3A Polyclonal Antibody

Catalog number: 11396-1-AP

Size: 30 µg/150 µl

Source: Rabbit

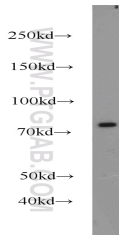
Isotype: IgG

Synonyms:

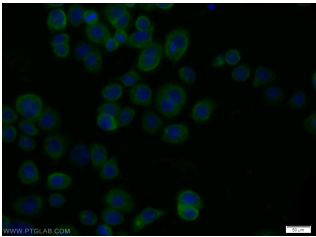
RPH3A; Exophilin 1, KIAA0985,

Rabphilin 3A, rabphilin 3A

homolog (mouse), RPH3A



COLO 320 cells were subjected to SDS PAGE followed by western blot with 11396-1-AP(RPH3A antibody) at dilution of 1:800



Immunofluorescent analysis of COLO 320 cells using 11396-1-AP(RPH3A Antibody) at dilution of 1:25 and Alexa Fluor 488-conjugated AffiniPure Goat Anti-Rabbit IgG(H+L)

Background

RAB3A is a small G protein that is thought to act in exocytosis of neurotransmitters and hormones in synaptic neurotransmission and cell-cell communication. RPH3A (RPH3A), a RAB3A effector, is a neuronal C2 domain tandem containing protein that is involved in the neuronal transmitter process. Huntington's disease (HD) is a hereditary neurodegenerative disorder characterized by progressive motor disturbances, cognitive defects and dementia. Level of rabphilin 3A is substantially decreased in synapses of most brain regions in R6/1 transgenic mouse model of HD suggesting a role of RPH3A in impaired synaptic transmission.

Applications

| | |
|-------------------------|--|
| Tested applications: | ELISA, WB, IF |
| Species specificity: | Human,Mouse,Rat; other species not tested. |
| Calculated RPH3A MW: | 690aa,76 kDa |
| Observed RPH3A MW: | 76kd |
| Positive WB detected in | COLO 320 cells, human brain tissue |
| Positive IF detected in | COLO 320 cells |
| Recommended dilution: | WB: 1:200-1:2000 IF: 1:10-1:100 |

Application key: WB = Western blotting, IHC = Immunohistochemistry, IF = Immunofluorescence, IP = Immunoprecipitation

Immunogen information

| | |
|---------------------------|------------------------------|
| Immunogen: | Ag1956 |
| GenBank accession number: | BC017259 |
| Gene ID (NCBI): | 22895 |
| Full name: | Rabphilin 3A homolog (mouse) |

Product information

| | |
|----------------------|---|
| Purification method: | Antigen affinity purification |
| Storage: | PBS with 0.1% sodium azide and 50% glycerol pH 7.3. Store at -20°C. |