

LEFTY2 Polyclonal Antibody

Catalog number: 13991-1-AP

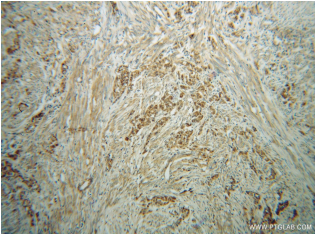
Size: 57 µg/150 µl

Source: Rabbit

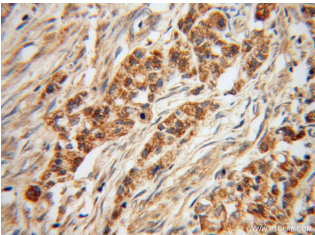
Isotype: IgG

Synonyms:

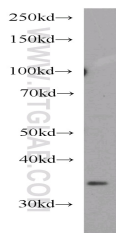
LEFTY2; EBAF, LEFTA, LEFTY2, LEFTYA, Protein lefty 2, Protein lefty A, TGF beta 4, TGFβ4



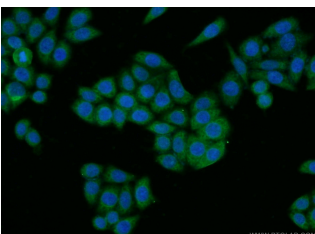
Immunohistochemical of paraffin-embedded human endometrial cancer using 13991-1-AP (LEFTY2 antibody) at dilution of 1:50 (under 10x lens)



Immunohistochemical of paraffin-embedded human endometrial cancer using 13991-1-AP (LEFTY2 antibody) at dilution of 1:50 (under 40x lens)



HeLa cells were subjected to SDS PAGE followed by western blot with 13991-1-AP (LEFTY2 antibody) at dilution of 1:500



Immunofluorescent analysis

Applications

Tested applications:	ELISA, WB, IHC, IF
Species specificity:	Human, Mouse, Rat; other species not tested.
Calculated LEFTY2 MW:	366aa, 41 kDa
Observed LEFTY2 MW:	34 kDa
Positive WB detected in	HeLa cells, mouse uterus tissue
Positive IHC detected in	Human endometrial cancer tissue
Positive IF detected in	HeLa cells
Recommended dilution:	WB: 1:200-1:2000
	IHC: 1:20-1:200
	IF: 1:20-1:200

Application key: WB = Western blotting, IHC = Immunohistochemistry, IF = Immunofluorescence, IP = Immunoprecipitation

Immunogen information

Immunogen:	Ag5073
GenBank accession number:	BC035718
Gene ID (NCBI):	7044
Full name:	Left-right determination factor 2

Product information

Purification method:	Antigen affinity purification
Storage:	PBS with 0.02% sodium azide and 50% glycerol pH 7.3. Store at -20°C.

of HeLa cells using 13991-1-
AP(LEFTY2 Antibody) at
dilution of 1:50 and Alexa
Fluor 488-conjugated
AffiniPure Goat Anti-Rabbit
IgG(H+L)