

MATR3 Polyclonal Antibody

Catalog number: 12202-2-AP

Size: 20 µg/150 µl

Source: Rabbit

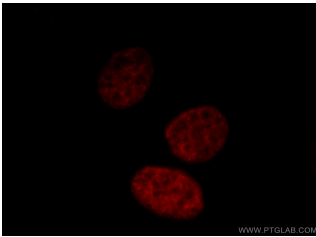
Isotype: IgG

Synonyms:

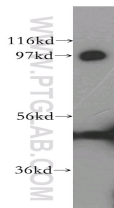
MATR3; DKFZp686K0542,

DKFZp686K23100, KIAA0723,

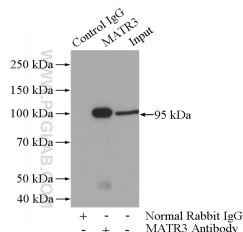
MATR3, matrin 3



Immunofluorescent analysis of HepG2 cells, using MATR3 antibody 12202-1-AP at 1:25 dilution and Rhodamine-labeled goat anti-rabbit IgG (red).



MCF7 cells were subjected to SDS PAGE followed by western blot with 12202-2-AP(MATR3 antibody) at dilution of 1:400



IP Result of anti-MATR3 (IP:12202-2-AP, 4µg; Detection:12202-2-AP 1:300) with MCF-7 cells lysate 1040µg.

Applications

Tested applications:	ELISA, WB, IF, IP
Species specificity:	Human, Mouse, Rat; other species not tested.
Calculated MATR3 MW:	847aa, 95 kDa
Observed MATR3 MW:	95 kDa
Positive WB detected in:	MCF7 cells
Positive IP detected in:	MCF-7 cells
Positive IF detected in:	HepG2 cells
Recommended dilution:	WB: 1:500-1:5000
	IP: 1:200-1:1000
	IF: 1:10-1:100

Application key: WB = Western blotting, IHC = Immunohistochemistry, IF = Immunofluorescence, IP = Immunoprecipitation

Immunogen information

Immunogen:	Ag2843
GenBank accession number:	BC015031
Gene ID (NCBI):	9782
Full name:	Matrin 3

Product information

Purification method:	Antigen affinity purification
Storage:	PBS with 0.1% sodium azide and 50% glycerol pH 7.3. Store at -20°C.