

PPP2CB Polyclonal Antibody

Catalog number: 12554-2-AP

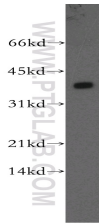
Size: 20 µg/150 µl

Source: Rabbit

Isotype: IgG

Synonyms:

PPP2CB; PP2CB



mouse lung tissue were subjected to SDS PAGE followed by western blot with 12554-2-AP(PPP2CB Antibody) at dilution of 1:1000

Applications

| | |
|--------------------------|--|
| Tested applications: | ELISA, WB |
| Species specificity: | Human, mouse, rat; other species not tested. |
| Positive WB detected in: | Mouse lung tissue |
| Calculated PPP2CB MW: | 309aa,36kd |
| Observed PPP2CB MW: | 36kd |
| Recommended dilution: | WB: 1:500-1:5000 |

Application key: WB = Western blotting, IHC = Immunohistochemistry, IF = Immunofluorescence, IP = Immunoprecipitation, FC = Flow cytometry

Immunogen information

| | |
|---------------------------|--|
| Immunogen: | Ag3233 |
| GenBank accession number: | BC012022 |
| Gene ID (NCBI): | 5516 |
| Full name: | Protein phosphatase 2 (formerly 2A), catalytic subunit, beta isoform |

Product information

| | |
|----------------------|--|
| Purification method: | Antigen affinity purification |
| Storage: | PBS with 0.02% sodium azide and 50% glycerol pH 7.3. Store at -20°C. |