

POLG2 Polyclonal Antibody

Catalog number: 10997-2-AP

Size: 37 µg/150 µl

Source: Rabbit

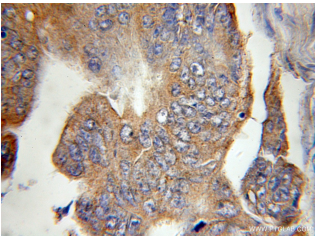
Isotype: IgG

Synonyms:

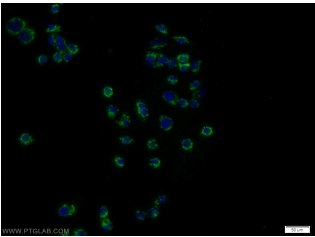
POLG2; HP55, MTPOLB, p55,

PEOA4, POLB, POLG BETA,

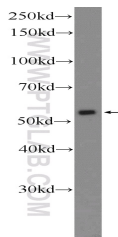
POLG2, POLGB



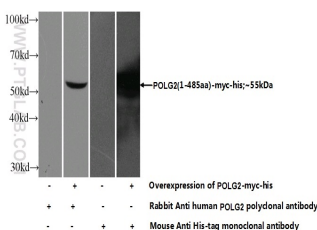
Immunohistochemical of paraffin-embedded human colon cancer using 10997-2-AP (POLG2 antibody) at dilution of 1:100 (under 10x lens)



Immunofluorescent analysis of COLO 320 cells using 10997-2-AP (POLG2 Antibody) at dilution of 1:25 and Alexa Fluor 488-conjugated AffiniPure Goat Anti-Rabbit IgG(H+L)



COLO 320 cells were subjected to SDS PAGE followed by western blot with 10997-2-AP (POLG2 Antibody) at dilution of 1:1000



Transfected HEK-293 cells were subjected to SDS PAGE

Background

POLG2(DNA polymerase subunit gamma-2, mitochondrial) can stimulate the polymerase and exonuclease activities. Defects in POLG2 are the cause of progressive external ophthalmoplegia with mitochondrial DNA deletions autosomal dominant type 4 (PEOA4) [MIM:610131]. Western blot result suggested that the POLG2 expressed in human fetal kidney and U-251 MG cell lines with a single band of 55kd.

Applications

Tested applications:	ELISA, IHC, IF, WB
Species specificity:	Human, Mouse, Rat; other species not tested.
Calculated POLG2 MW:	55 kDa
Observed POLG2 MW:	55 kDa
Positive WB detected in	COLO 320 cells, HeLa cells, mouse colon tissue, Transfected HEK-293 cells
Positive IHC detected in	Human colon cancer tissue
Positive IF detected in	COLO 320 cells
Recommended dilution:	WB: 1:500-1:5000 IHC: 1:20-1:200 IF: 1:10-1:100

Application key: WB = Western blotting, IHC = Immunohistochemistry, IF = Immunofluorescence, IP = Immunoprecipitation

Immunogen information

Immunogen:	Ag1424
GenBank accession number:	BC009194
Gene ID (NCBI):	11232
Full name:	Polymerase (DNA directed), gamma 2, accessory subunit

Product information

Purification method:	Antigen affinity purification
Storage:	PBS with 0.1% sodium azide and 50% glycerol pH 7.3. Store at -20°C.

followed by western blot with
10997-2-AP(POLG2
Antibody) at dilution of 1:800