

## IFITM2 Polyclonal Antibody

Catalog number: 12769-1-AP

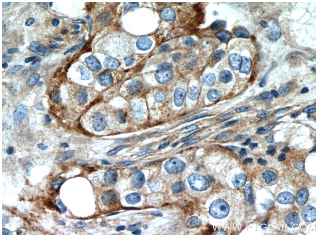
Size: 20 µg/150 µl

Source: Rabbit

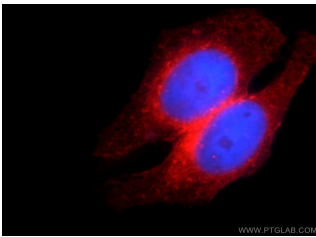
Isotype: IgG

Synonyms:

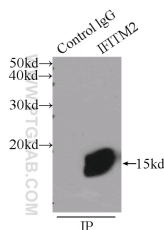
IFITM2; 1 8D, IFITM2



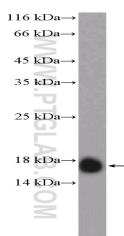
Immunohistochemistry of paraffin-embedded human breast cancer slide using 12769-1-AP (IFITM2 Antibody) at dilution of 1:50



Immunofluorescent analysis of HepG2 cells using 12769-1-AP (IFITM2 Antibody) at dilution of 1:50 and Rhodamine-Goat anti-Rabbit IgG



IP Result of anti-IFITM2 (IP:12769-1-AP, 3ug; Detection:12769-1-AP 1:300) with HepG2 cells lysate 1720ug.



### Background

IFITM2, also named as 1-8D, belongs to the CD225 family. It is an IFN-induced antiviral protein that mediates cellular innate immunity to at least three major human pathogens, namely influenza A H1N1 virus, West Nile virus (WNV), and dengue virus, by inhibiting the early steps of replication. IFITM2 induces cell cycle arrest and mediates apoptosis by caspase activation and in p53-independent manner. It is overexpressed in colon carcinoma. IFITM2 is a novel pro-apoptotic gene that will provide new insights into the regulated cellular pathways to death. IFITM proteins are recently identified as viral restriction factors that inhibit infection mediated by the influenza A virus (IAV) hemagglutinin (HA) protein. Also they serve as important components of the innate immune system to restrict HIV-1 infection. Catalog#12769-1-AP is a rabbit polyclonal antibody produced with full-length of human IFITM2.

### Applications

Tested applications:	ELISA, IP, IHC, IF, WB
Cited applications:	FC, IF, WB
Species specificity:	Human; other species not tested.
Cited species:	Human, virus
Calculated IFITM2 MW:	132aa,15 kDaa
Observed IFITM2 MW:	15kd
Positive WB detected in	MCF-7 cells, human lung tissue
Positive IP detected in	HepG2 cells
Positive IHC detected in	Human breast cancer tissue, human ovary tumor tissue
Positive IF detected in	HepG2 cells
Recommended dilution:	WB: 1:1000-1:10000
	IP: 1:200-1:1000
	IHC: 1:20-1:200
	IF: 1:20-1:200

Application key: WB = Western blotting, IHC = Immunohistochemistry, IF = Immunofluorescence, IP = Immunoprecipitation

### Immunogen information

Immunogen:	Ag3451
GenBank accession number:	BC009696
Gene ID (NCBI):	10581
Full name:	Interferon induced transmembrane protein 2 (1-8D)

### Product information

Purification method:	Antigen affinity purification
Storage:	PBS with 0.1% sodium azide and 50% glycerol pH 7.3. Store at -20°C.

**MCF-7 cells were subjected to  
SDS PAGE followed by  
western blot with 12769-1-  
AP( IFITM2 Antibody) at  
dilution of 1:2000**