

## MT3 Polyclonal Antibody

Catalog number: 12179-1-AP

Size: 41 µg/150 µl

Source: Rabbit

Isotype: IgG

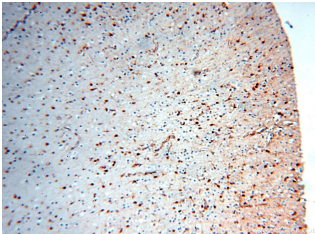
Synonyms:

MT3; GIF, GIFB, GRIF, Growth inhibitory factor,

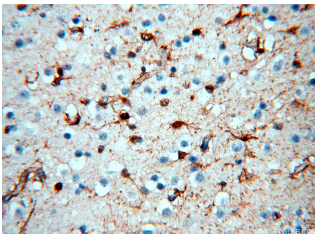
metallothionein 3,

Metallothionein III, MT 3, MT

III, MT3



Immunohistochemical of paraffin-embedded human brain using 12179-1-AP(MT3 antibody) at dilution of 1:50 (under 10x lens)



Immunohistochemical of paraffin-embedded human brain using 12179-1-AP(MT3 antibody) at dilution of 1:50 (under 40x lens)

### Background

MT3(Metallothionein-3) is also names as GIF(Growth inhibitory factor),GIFB inhibits N-glycosylation of IgE-binding factors and that unglycosylated IgE-binding factors selectively suppressed IgE sybthesis.The major cell source of GIF is antigen-specific suppressor T(Ts)cell(PMID:10967025).The molecular size of GIF from T cells is 15 kDa, while GIF from macrophages consisted of 40-and 15-kDa molecules(PMID:2417235).

### Applications

Tested applications:	ELISA, IHC
Species specificity:	Human,Mouse,Rat; other species not tested.
Calculated MT3 MW:	68aa,7 kDa
Observed MT3 MW:	
Positive IHC detected in	Human brain tissue, human kidney tissue, human testis tissue
Recommended dilution:	IHC: 1:20-1:200

Application key: WB = Western blotting, IHC = Immunohistochemistry, IF = Immunofluorescence, IP = Immunoprecipitation

### Immunogen information

Immunogen:	Ag2823
GenBank accession number:	BC013081
Gene ID (NCBI):	4504
Full name:	Metallothionein 3

### Product information

Purification method:	Antigen affinity purification
Storage:	PBS with 0.02% sodium azide and 50% glycerol pH 7.3. Store at -20°C.