

DCLRE1C Polyclonal Antibody

Catalog number: 11747-1-AP

Size: 25 µg/150 µl

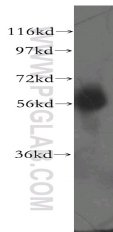
Source: Rabbit

Isotype: IgG

Synonyms:

DCLRE1C; A SCID, ARTEMIS,
ASCID, DCLRE1C, DCLREC1C,
FLJ11360, FLJ36438, hSNM1C,

Protein A SCID, Protein
artemis, RS SCID, SCIDA, SNM1
homolog C, SNM1 like protein,
SNM1C



HeLa cells were subjected to SDS
PAGE followed by western blot with
11747-1-AP(DCLRE1C antibody) at
dilution of 1:400

Applications

Tested applications:	ELISA, WB
Species specificity:	Human, Mouse, Rat; other species not tested.
Calculated DCLRE1C MW:	692aa, 78 kDa
Observed DCLRE1C MW:	60 kDa
Positive WB detected in	HeLa cells, human kidney tissue
Recommended dilution:	WB: 1:200-1:2000

Application key: WB = Western blotting, IHC = Immunohistochemistry, IF = Immunofluorescence, IP = Immunoprecipitation

Immunogen information

Immunogen:	Ag2343
GenBank accession number:	BC022254
Gene ID (NCBI):	64421
Full name:	DNA cross-link repair 1C (PSO2 homolog, S. cerevisiae)

Product information

Purification method:	Antigen affinity purification
Storage:	PBS with 0.1% sodium azide and 50% glycerol pH 7.3. Store at -20°C.