

## RPN2 Polyclonal Antibody

Catalog number: 10576-1-AP

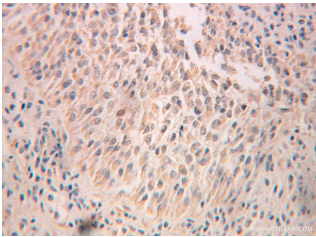
Size: 37 µg/150 µl

Source: Rabbit

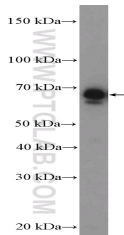
Isotype: IgG

Synonyms:

RPN2; RIBIIR, Ribophorin 2,  
ribophorin II, RPN II, RPN2,  
RPNII, SWP1



Immunohistochemical of paraffin-embedded human ovary tumor using 10576-1-AP (RPN2 antibody) at dilution of 1:100 (under 25x lens)



NIH/3T3 cells were subjected to SDS PAGE followed by western blot with 10576-1-AP (RPN2 Antibody) at dilution of 1:600

### Background

RPN2 (Ribophorin II), an integral rough ER membrane glycoprotein, is part of an N-oligosaccharyl transferase complex and is involved in translocation and the maintenance of the structural uniqueness of the rough ER. RPN2 expression has been reported to be significantly associated with solid cancers, including breast cancer, esophageal squamous cell carcinoma, colorectal cancer, and lung squamous cell carcinoma.

### Applications

Tested applications:	ELISA, IHC, WB
Species specificity:	Human, Mouse, Rat; other species not tested.
Calculated RPN2 MW:	69 kDa
Observed RPN2 MW:	68-69 kDa
Positive WB detected in	NIH/3T3 cells
Positive IHC detected in	Human ovary tumor tissue
Recommended dilution:	WB: 1:200-1:2000 IHC: 1:20-1:200

Application key: WB = Western blotting, IHC = Immunohistochemistry, IF = Immunofluorescence, IP = Immunoprecipitation

### Immunogen information

Immunogen:	Ag0862
GenBank accession number:	BC003560
Gene ID (NCBI):	6185
Full name:	Ribophorin II

### Product information

Purification method:	Antigen affinity purification
Storage:	PBS with 0.1% sodium azide and 50% glycerol pH 7.3. Store at -20°C.