

CEBPG Polyclonal Antibody

Catalog number: 12997-1-AP

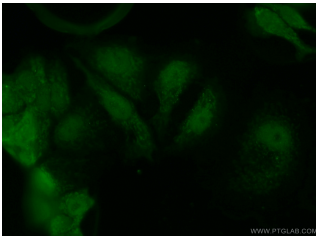
Size: 33 µg/150 µl

Source: Rabbit

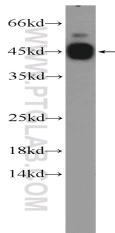
Isotype: IgG

Synonyms:

CEBPG; C/EBP gamma, CEBPG,
GPE1BP, IG/EBP 1



Immunofluorescent analysis of MCF-7 cells using 12997-1-AP (CEBPG Antibody) at dilution of 1:50 and Alexa Fluor 488-conjugated AffiniPure Goat Anti-Rabbit IgG(H+L)



mouse heart tissue were subjected to SDS PAGE followed by western blot with 12997-1-AP(CEBPG Antibody) at dilution of 1:300

Applications

Tested applications:	ELISA, WB, IF
Species specificity:	Human,Mouse,Rat; other species not tested.
Calculated CEBPG MW:	150aa,16 kDa
Observed CEBPG MW:	45-50 kDa
Positive WB detected in	Mouse heart tissue, MCF-7 cells
Positive IF detected in	MCF-7 cells
Recommended dilution:	WB: 1:200-1:1000 IF: 1:20-1:200

Application key: WB = Western blotting, IHC = Immunohistochemistry, IF = Immunofluorescence, IP = Immunoprecipitation

Immunogen information

Immunogen:	Ag3663
GenBank accession number:	BC013128
Gene ID (NCBI):	1054
Full name:	CCAAT/enhancer binding protein (C/EBP), gamma

Product information

Purification method:	Antigen affinity purification
Storage:	PBS with 0.1% sodium azide and 50% glycerol pH 7.3. Store at -20°C.