

POT1 Polyclonal Antibody

Catalog number: 10581-1-AP

Size: 45 µg/150 µl

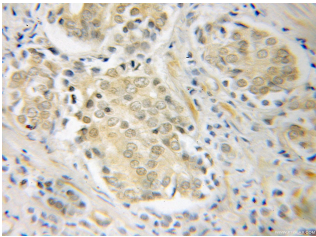
Source: Rabbit

Isotype: IgG

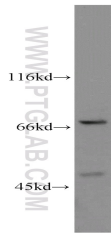
Synonyms:

POT1; DKFZp586D211, hPot1,

POT1



Immunohistochemical of paraffin-embedded human prostate cancer using 10581-1-AP (POT1 antibody) at dilution of 1:100 (under 25x lens)



HeLa cells were subjected to SDS PAGE followed by western blot with 10581-1-AP (POT1 antibody) at dilution of 1:500

Background

Protection of telomeres 1 (POT1) is a conserved protein that binds the G-rich strand of its own telomeric repeat sequence, with a role in protecting chromosome ends. It's a housekeeping gene that is required to ensure the integrity of chromosome ends in all cells. It's a component of the telomerase ribonucleoprotein (RNP) complex that is essential for the replication of chromosome termini. It consists of the TRF1 complex that is involved in the regulation of telomere length by cis-inhibition of telomerase.

Applications

Tested applications:	ELISA, WB, IHC
Cited applications:	IP
Species specificity:	Human, Mouse; other species not tested.
Cited species:	Human
Calculated POT1 MW:	71 kDa
Observed POT1 MW:	71 kDa
Positive WB detected in:	HeLa cells, PC-3 cells
Positive IHC detected in:	Human prostate cancer tissue
Recommended dilution:	WB: 1:200-1:2000 IHC: 1:20-1:200

Application key: WB = Western blotting, IHC = Immunohistochemistry, IF = Immunofluorescence, IP = Immunoprecipitation

Immunogen information

Immunogen:	Ag0875
GenBank accession number:	BC002923
Gene ID (NCBI):	25913
Full name:	POT1 protection of telomeres 1 homolog (S. pombe)

Product information

Purification method:	Antigen affinity purification
Storage:	PBS with 0.1% sodium azide and 50% glycerol pH 7.3. Store at -20°C.