

VPS35 Polyclonal Antibody

Catalog number: 10236-1-AP

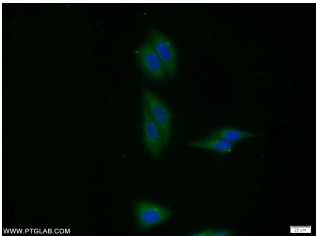
Size: 39 µg/150 µl

Source: Rabbit

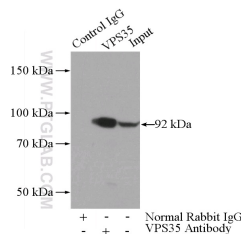
Isotype: IgG

Synonyms:

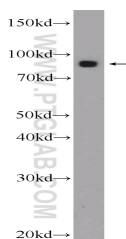
VPS35; DKFZp434E1211,
DKFZp434P1672, FLJ10752,
FLJ13588, FLJ20388, hVPS35,
Maternal embryonic 3, MEM3,
Vesicle protein sorting 35,
VPS35



Immunofluorescent analysis of HepG2 cells using 10236-1-AP (VPS35 Antibody) at dilution of 1:25 and Alexa Fluor 488-conjugated AffiniPure Goat Anti-Rabbit IgG(H+L)



IP Result of anti-VPS35 (IP:10236-1-AP, 4µg; Detection:10236-1-AP 1:600) with mouse kidney tissue lysate 4000µg.



HepG2 cells were subjected to SDS PAGE followed by western blot with 10236-1-AP (VPS35 Antibody) at dilution of 1:600

Background

VPS35 protein belongs to a group of vacuolar protein sorting (VPS) proteins, which ensure the proper delivery of organelle-specific proteins in eukaryotic cells. VPS35 is the core of a multimeric complex, termed the retromer complex, which is involved in retrograde transport of proteins from endosomes to the trans-Golgi network. Vps35 serves as the core of the multimeric complex by binding directly to Vps26 and Vps29 and SNX1. Northern blot analyses in 16 tissues showed that one transcript of Vps35 with a size of 3.6 kb was highly expressed in brain, heart, testis, ovary, small intestine, spleen, skeletal muscle, and placenta and expressed at moderate or low levels in other tissues. Another transcript of Vps35, a message of 3.0 kb, was also expressed with proportionally lower levels than the 3.6-kb transcript in all the tissues except that the 3.0-kb transcript was not detected in brain. Human Vps35 is mapped at 16q13-q21.

Applications

Tested applications:	ELISA, WB, IF, IP
Species specificity:	Human, Mouse, Rat; other species not tested.
Calculated VPS35 MW:	92 kDa
Observed VPS35 MW:	90-98kd
Positive WB detected in	HepG2 cells, mouse brain tissue, mouse kidney tissue, rat kidney tissue, rat liver tissue
Positive IP detected in	Mouse kidney tissue
Positive IF detected in	HepG2 cells
Recommended dilution:	WB: 1:200-1:2000 IP: 1:200-1:2000 IF: 1:10-1:100

Application key: WB = Western blotting, IHC = Immunohistochemistry, IF = Immunofluorescence, IP = Immunoprecipitation

Immunogen information

Immunogen:	Ag0340
GenBank accession number:	BC002414
Gene ID (NCBI):	55737
Full name:	Vacuolar protein sorting 35 homolog (S. cerevisiae)

Product information

Purification method:	Antigen affinity purification
Storage:	PBS with 0.1% sodium azide and 50% glycerol pH 7.3. Store at -20°C.