

## VPS26A Polyclonal Antibody

Catalog number: 12804-1-AP

Size: 32 µg/150 µl

Source: Rabbit

Isotype: IgG

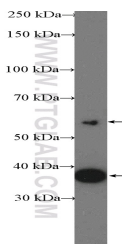
Synonyms:

VPS26A; FLJ12930, HB58,

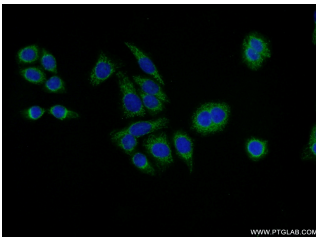
Hbeta58, hVPS26, PEP8A,

Vesicle protein sorting 26A,

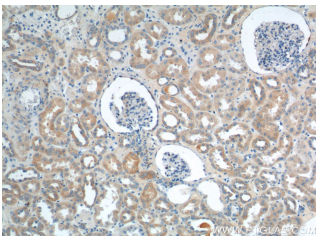
VPS26, VPS26A



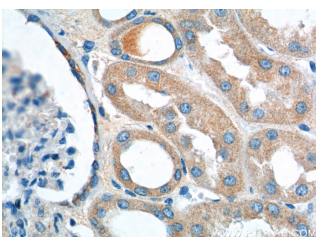
HEK-293 cells were subjected to SDS PAGE followed by western blot with 12804-1-AP( VPS26A Antibody) at dilution of 1:300



Immunofluorescent analysis of HeLa cells using 12804-1-AP( VPS26A Antibody) at dilution of 1:50 and Alexa Fluor 488-conjugated AffiniPure Goat Anti-Rabbit IgG(H+L)



Immunohistochemistry of paraffin-embedded human kidney tissue slide using 12804-1-AP( VPS26A Antibody) at dilution of 1:200 (under 10x lens).



Immunohistochemistry of

### Background

In mammals, there are two paralogues of yeast Vps26, VPS26A and VPS26B (PMID: 16190980). VPS26 is a component of the retromer complex composed of VPS26 (VPS26A or VPS26B), VPS29, VPS35, SNX1 and SNX2. VPS26A and VPS26B subunits define distinct retromer complexes (PMID: 21920005). The retromer complex is important in recycling transmembrane receptors from endosomes to the trans-Golgi network (TGN).

### Applications

Tested applications:	ELISA, IF, IHC
Species specificity:	Human, Mouse, Rat; other species not tested.
Calculated VPS26A MW:	38 kDa
Observed VPS26A MW:	38 kDa
Positive IHC detected in	Human kidney tissue, human cervical cancer tissue
Positive IF detected in	HeLa cells
Recommended dilution:	IHC: 1:20-1:200 IF: 1:20-1:200

Application key: WB = Western blotting, IHC = Immunohistochemistry, IF = Immunofluorescence, IP = Immunoprecipitation

### Immunogen information

Immunogen:	Ag3391
GenBank accession number:	BC022505
Gene ID (NCBI):	9559
Full name:	Vacuolar protein sorting 26 homolog A (S. pombe)

### Product information

Purification method:	Antigen affinity purification
Storage:	PBS with 0.02% sodium azide and 50% glycerol pH 7.3. Store at -20°C.

paraffin-embedded human  
kidney tissue slide using  
12804-1-AP ( VPS26A  
Antibody) at dilution of 1:200  
(under 40x lens).