

Secretin receptor Polyclonal Antibody

Catalog number: 14172-1-AP

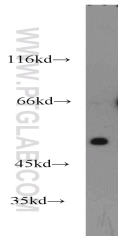
Size: 24 µg/150 µl

Source: Rabbit

Isotype: IgG

Synonyms:

SCTR; SCT R, SCTR, Secretin receptor, SR



mouse pancreas tissue were subjected to SDS PAGE followed by western blot with 14172-1-AP(SCTR antibody) at dilution of 1:1500

Background

Secretin receptor (SCTR) is a member of the family B G protein-coupled receptors. SCTR is a receptor for secretin, a gastrointestinal peptide hormone secreted by the S cells of the duodenum. Secretin regulates water homeostasis throughout the body, and influences the environment of the duodenum by regulating secretions in the stomach and pancreas. Studies suggest that secretin can act as a neuropeptide within the central nervous system (CNS), thus secretin/SCTR may regulate the function of the CNS.

Applications

Tested applications:	ELISA, WB
Species specificity:	Human,Mouse,Rat; other species not tested.
Calculated Secretin receptor MW:	440aa,50 kDa
Observed Secretin receptor MW:	50-55kd
Positive WB detected in	Mouse pancreas tissue
Recommended dilution:	WB: 1:500-1:5000

Application key: WB = Western blotting, IHC = Immunohistochemistry, IF = Immunofluorescence, IP = Immunoprecipitation

Immunogen information

Immunogen:	Ag5371
GenBank accession number:	BC035757
Gene ID (NCBI):	6344
Full name:	Secretin receptor

Product information

Purification method:	Antigen affinity purification
Storage:	PBS with 0.02% sodium azide and 50% glycerol pH 7.3. Store at -20°C.