

Placental lactogen Polyclonal Antibody

Catalog number: 10178-1-AP

Size: 20 µg/150 µl

Source: Rabbit

Isotype: IgG

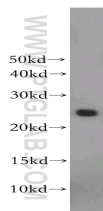
Synonyms:

CSH1; Choriomammotropin,

CSA, CSH1, CSH2, CSMT,

FLJ75407, Lactogen, PL,

Placental lactogen



human placenta tissue were subjected to SDS PAGE followed by western blot with 10178-1-AP(CSH1 antibody) at dilution of 1:500

Background

Chorionic somatomammotropin hormone 1 (placental lactogen, CSH1), is a hormone with the molecular weight of 25 kDa. The data suggest that this protein may link with the Silver-Russell syndrome (SRS), a disease of pre- and postnatal growth restriction and a characteristic small, triangular face. SRS is also accompanied by other dysmorphic features including fifth finger clinodactyly and skeletal asymmetry.

Applications

Tested applications: ELISA, WB

Species specificity: Human; other species not tested.

Calculated Placental lactogen 25 kDa

MW:

Observed Placental lactogen 22-25 kDa

MW:

Positive WB detected in Human placenta tissue

Recommended dilution: WB: 1:200-1:2000

Application key: WB = Western blotting, IHC = Immunohistochemistry, IF = Immunofluorescence, IP = Immunoprecipitation

Immunogen information

Immunogen: Ag0201

GenBank accession number: BC002717

Gene ID (NCBI): 1442

Full name: Chorionic somatomammotropin hormone 1 (placental lactogen)

Product information

Purification method: Antigen affinity purification

Storage: PBS with 0.1% sodium azide and 50% glycerol pH 7.3. Store at -20°C.