

NIT1 Polyclonal Antibody

Catalog number: 14380-1-AP

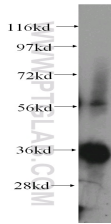
Size: 22 µg/150 µl

Source: Rabbit

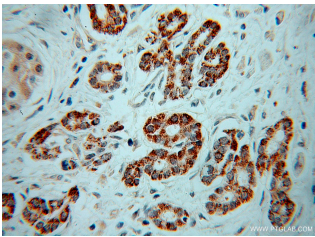
Isotype: IgG

Synonyms:

NIT1; MGC57670



human heart tissue were subjected to SDS PAGE followed by western blot with 14380-1-AP(NIT1 Antibody) at dilution of 1:800



Immunohistochemistry of paraffin-embedded human pancreas cancer using 14380-1-AP(NIT1 Antibody) at Dilution 1:50 (under 40x lens)

Applications

Tested applications:	ELISA, WB, IHC
Species specificity:	Human, mouse, rat; other species not tested.
Positive WB detected in:	Human heart tissue, HEK-293 cells
Calculated NIT1 MW:	40kd
Observed NIT1 MW:	36kd
Positive IHC detected in:	Human pancreas cancer
Recommended dilution:	WB: 1:200-1:2000 IHC: 1:20-1:200

Application key: WB = Western blotting, IHC = Immunohistochemistry, IF = Immunofluorescence, IP = Immunoprecipitation, FC = Flow cytometry

Immunogen information

Immunogen:	Ag5764
GenBank accession number:	BC046149
Gene ID (NCBI):	4817
Full name:	Nitrilase 1

Product information

Purification method:	Antigen affinity purification
Storage:	PBS with 0.02% sodium azide and 50% glycerol pH 7.3. Store at -20°C.