

NLRP1 Polyclonal Antibody

Catalog number: 12256-1-AP

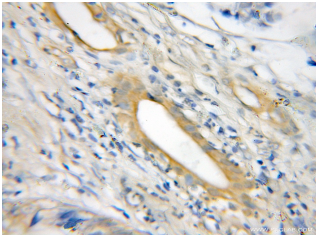
Size: 38 µg/150 µl

Source: Rabbit

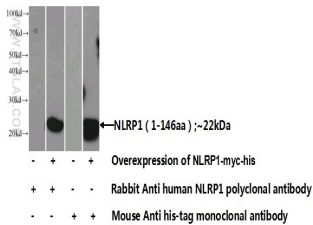
Isotype: IgG

Synonyms:

NLRP1; CARD7, CLR17.1,
DEFCAP, DEFCAP L/S,
DKFZp586O1822, KIAA0926,
NAC, NALP1, NLRP1, PP1044,
SLEV1, VAMAS1



Immunohistochemical of paraffin-embedded human pancreas cancer using 12256-1-AP (NLRP1 antibody) at dilution of 1:50 (under 10x lens)



Transfected HEK-293 cells were subjected to SDS PAGE followed by western blot with 12256-1-AP (NLRP1 Antibody) at dilution of 1:1000

Applications

Tested applications:	ELISA, IHC, WB
Species specificity:	Human; other species not tested.
Calculated NLRP1 MW:	155kd
Observed NLRP1 MW:	160-166kd
Positive WB detected in	Transfected HEK-293 cells
Positive IHC detected in	Human pancreas cancer tissue
Recommended dilution:	WB: 1:500-1:5000 IHC: 1:20-1:200

Application key: WB = Western blotting, IHC = Immunohistochemistry, IF = Immunofluorescence, IP = Immunoprecipitation

Immunogen information

Immunogen:	Ag2908
GenBank accession number:	BC016965
Gene ID (NCBI):	22861
Full name:	NLR family, pyrin domain containing 1

Product information

Purification method:	Antigen affinity purification
Storage:	PBS with 0.02% sodium azide and 50% glycerol pH 7.3. Store at -20°C.