

CHMP2A Polyclonal Antibody

Catalog number: 10477-1-AP

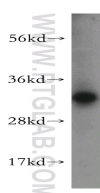
Size: 28 µg/150 µl

Source: Rabbit

Isotype: IgG

Synonyms:

CHMP2A; CHMP2, CHMP2A,
chromatin modifying protein
2A, hVps2 1, VPS2, Vps2 1,
VPS2A



HEK-293 cells were subjected to SDS PAGE followed by western blot with 10477-1-AP(CHMP2A antibody) at dilution of 1:300

Background

CHMP2A, also known as Vps2-1, belongs to the chromatin-modifying protein/charged multivesicular body protein (CHMP) family. CHMP2A is a component of ESCRT-III (endosomal sorting complex required for transport III), a complex involved in degradation of surface receptor proteins and formation of endocytic multivesicular bodies (MVBs). It has been shown that CHMP2A can interact with and regulate the function of the AAA-ATPase VPS4B (PMID: 15173323). CHMP2A is also reported to be involved in HIV budding (PMID: 21396898; 23051622).

Applications

Tested applications:	ELISA, WB
Cited applications:	IF, WB
Species specificity:	Human, Mouse, Rat; other species not tested.
Cited species:	Human
Calculated CHMP2A MW:	32 kDa
Observed CHMP2A MW:	32 kDa
Positive WB detected in	HEK-293 cells, HepG2 cells
Recommended dilution:	WB: 1:200-1:1000

Application key: WB = Western blotting, IHC = Immunohistochemistry, IF = Immunofluorescence, IP = Immunoprecipitation

Immunogen information

Immunogen:	Ag0719
GenBank accession number:	BC002502
Gene ID (NCBI):	27243
Full name:	Chromatin modifying protein 2A

Product information

Purification method:	Antigen affinity purification
Storage:	PBS with 0.1% sodium azide and 50% glycerol pH 7.3. Store at -20°C.