

## ZFP36 Polyclonal Antibody

Catalog number: 12737-1-AP

Size: 50 µg/150 µl

Source: Rabbit

Isotype: IgG

Synonyms:

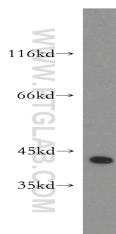
ZFP36; GOS24, GOS24, NUP475,

Protein TIS11A, RNF162A,

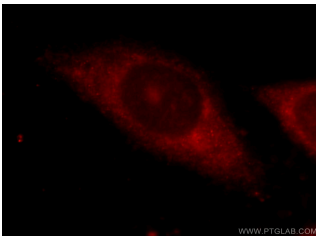
TIS11, TIS11A, Tristetraproline,

TTP, Zfp 36, ZFP36, Zinc finger

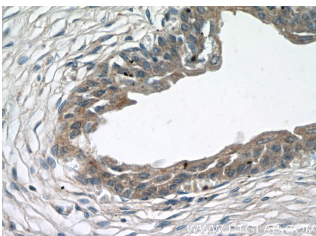
protein 36 homolog



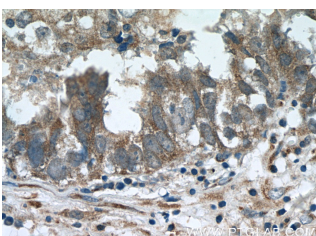
mouse lung tissue were subjected to SDS PAGE followed by western blot with 12737-1-AP(ZFP36 antibody) at dilution of 1:300



Immunofluorescent analysis of HepG2 cells using 12737-1-AP( ZFP36 Antibody) at dilution of 1:25 and Rhodamine-Goat anti-Rabbit IgG



Immunohistochemistry of paraffin-embedded human bladder tissue slide using 12737-1-AP( ZFP36 Antibody) at dilution of 1:50 (under 40x lens)



### Background

The expression of many cytokines is regulated post-transcriptionally by factors that modulate mRNA transport, translation, and stability. Much of this regulation occurs by the binding and stabilizing, or destabilizing, of cytokine mRNAs by proteins that recognize adenosine and uridine-rich elements (AREs) in untranslated regions of target transcripts. Zfp36 is a mRNA-binding protein involved in post-transcriptional regulation of AU-rich element (ARE)-containing mRNAs. It was demonstrated to physically interact with the p65 subunit of nuclear factor-κB leading to decreased nuclear import and diminished transcriptional activation mediated by nuclear factor-κB. It acted by specifically binding ARE-containing mRNAs and promoting their degradation, and has a crucial role in the post-transcriptional regulation of tumor necrosis factor (TNF).

### Applications

|                          |  |
|--------------------------|--|
| Tested applications:     | ELISA, WB, IF, IHC                               |
| Species specificity:     | Human, Mouse, Rat; other species not tested.     |
| Calculated ZFP36 MW:     | 326aa, 34 kDa                                    |
| Observed ZFP36 MW:       | 40-45 kDa  |
| Positive WB detected in  | Mouse lung tissue, A549 cells                    |
| Positive IHC detected in | Human breast cancer tissue, human bladder tissue |
| Positive IF detected in  | HepG2 cells                                      |
| Recommended dilution:    | WB: 1:200-1:2000                                 |
|                          | IHC: 1:20-1:200                                  |
|                          | IF: 1:10-1:100                                   |

Application key: WB = Western blotting, IHC = Immunohistochemistry, IF = Immunofluorescence, IP = Immunoprecipitation

### Immunogen information

|                           |   |
|---------------------------|---|
| Immunogen:                | Ag3461  |
| GenBank accession number: | BC009693  |
| Gene ID (NCBI):           | 7538  |
| Full name:                | Zinc finger protein 36, C3H type, homolog (mouse) |

### Product information

|                      |  |
|----------------------|--|
| Purification method: | Antigen affinity purification  |
| Storage:             | PBS with 0.02% sodium azide and 50% glycerol pH 7.3. Store at -20°C. |

**Immunohistochemistry of  
paraffin-embedded human  
breast cancer tissue slide  
using 12737-1-AP ( ZFP36  
Antibody) at dilution of 1:50  
(under 40x lens)**