

PREP Polyclonal Antibody

Catalog number: 11536-1-AP

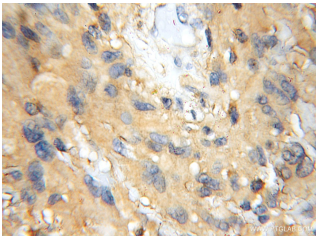
Size: 20 µg/150 µl

Source: Rabbit

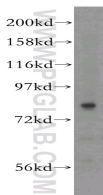
Isotype: IgG

Synonyms:

PREP; PREP, PE, PEP, Post proline cleaving enzyme, prolyl endopeptidase



Immunohistochemical of paraffin-embedded human gliomas using 11536-1-AP (PREP antibody) at dilution of 1:50 (under 10x lens)



human lung tissue were subjected to SDS PAGE followed by western blot with 11536-1-AP (PREP antibody) at dilution of 1:400

Background

PREP, also named as PE and PEP, belongs to the peptidase S9A family. It cleaves peptide bonds on the C-terminal side of prolyl residues within peptides that are up to approximately 30 amino acids long. Together with MMPs, PREP may play an important role in the formation of PGP and thus in the pathophysiology of lung emphysema. PREP is the only enzyme directly capable of cleaving PGP from shorter portions of collagen. (PMID:21112944)

Applications

Tested applications:	ELISA, WB, IHC
Cited applications:	IF, IHC, WB
Species specificity:	Human, mouse, rat; other species not tested.
Cited species:	Human, mouse
Calculated PREP MW:	710aa, 81 kDa
Observed PREP MW:	81kd
Positive WB detected in	Human lung tissue, Jurkat cells, mouse lung tissue
Positive IHC detected in	Human gliomas
Recommended dilution:	WB: 1:200-1:2000 IHC: 1:20-1:200

Application key: WB = Western blotting, IHC = Immunohistochemistry, IF = Immunofluorescence, IP = Immunoprecipitation

Immunogen information

Immunogen:	Ag2101
GenBank accession number:	BC030636
Gene ID (NCBI):	5550
Full name:	Prolyl endopeptidase

Product information

Purification method:	Antigen affinity purification
Storage:	PBS with 0.1% sodium azide and 50% glycerol pH 7.3. Store at -20°C.