

## NXF2 Polyclonal Antibody

Catalog number: 12185-1-AP

Size: 20 µg/150 µl

Source: Rabbit

Isotype: IgG

Synonyms:

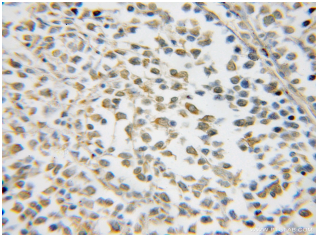
NXF2; Cancer/testis antigen 39,

CT39, FLJ20416, nuclear RNA

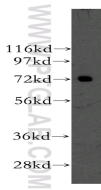
export factor 2, NXF2, NXF2B,

TAP like protein 2, TAPL 2,

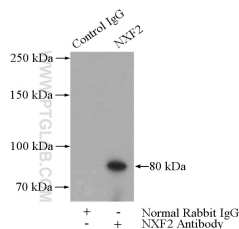
TAPL2



Immunohistochemical of paraffin-embedded human lymphoma using 12185-1-AP(NXF2 antibody) at dilution of 1:50 (under 10x lens)



mouse testis tissue were subjected to SDS PAGE followed by western blot with 12185-1-AP(NXF2 antibody) at dilution of 1:400



IP Result of anti-NXF2 (IP:12185-1-AP, 4µg; Detection:12185-1-AP 1:400) with mouse testis tissue lysate 4000µg.

### Background

NXF2, also named as Nuclear RNA export factor 2 or TAPL2, is a 626 amino acid protein, which contains one TAP-C domain, one RRM domain, one NTF2 domain, and four LRR repeats. NXF2 belongs to the NXF family and is expressed almost exclusively in testis. NXF2 localizes in the nucleus and is involved in the export of mRNA from the nucleus to the cytoplasm.

### Applications

Tested applications:	ELISA, WB, IHC, IP
Cited applications:	IF
Species specificity:	Human, Mouse, Rat; other species not tested.
Cited species:	Mouse
Calculated NXF2 MW:	626aa, 72 kDa
Observed NXF2 MW:	72 kDa
Positive WB detected in	Mouse testis tissue
Positive IP detected in	Mouse testis tissue
Positive IHC detected in	Human lymphoma tissue
Recommended dilution:	WB: 1:500-1:5000 IP: 1:200-1:1000 IHC: 1:20-1:200

Application key: WB = Western blotting, IHC = Immunohistochemistry, IF = Immunofluorescence, IP = Immunoprecipitation

### Immunogen information

Immunogen:	Ag2841
GenBank accession number:	BC015020
Gene ID (NCBI):	56001
Full name:	Nuclear RNA export factor 2

### Product information

Purification method:	Antigen affinity purification
Storage:	PBS with 0.1% sodium azide and 50% glycerol pH 7.3. Store at -20°C.