

IGSF8 Polyclonal Antibody

Catalog number: 14387-1-AP

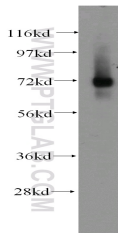
Size: 24 µg/150 µl

Source: Rabbit

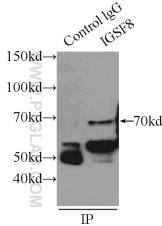
Isotype: IgG

Synonyms:

IGSF8; CD316, CD81 partner 3,
CD81P3, EWI 2, EWI2, IGSF8,
KCT 4, KCT4, LIR D1, PGRL



K-562 cells were subjected to SDS PAGE followed by western blot with 14387-1-AP (IGSF8 antibody) at dilution of 1:500



IP Result of anti-IGSF8 (IP:14387-1-AP, 3µg; Detection:14387-1-AP 1:500) with mouse brain tissue lysate 5000µg.

Applications

Tested applications:	ELISA, WB, IP
Species specificity:	Human, Mouse, Rat; other species not tested.
Calculated IGSF8 MW:	65 kDa
Observed IGSF8 MW:	70kd
Positive WB detected in	K-562 cells, HEK-293 cells, mouse brain tissue
Positive IP detected in	Mouse brain tissue
Recommended dilution:	WB: 1:500-1:5000 IP: 1:200-1:2000

Application key: WB = Western blotting, IHC = Immunohistochemistry, IF = Immunofluorescence, IP = Immunoprecipitation

Immunogen information

Immunogen:	Ag5846
GenBank accession number:	BC053881
Gene ID (NCBI):	93185
Full name:	Immunoglobulin superfamily, member 8

Product information

Purification method:	Antigen affinity purification
Storage:	PBS with 0.02% sodium azide and 50% glycerol pH 7.3. Store at -20°C.