

Beclin 1 Polyclonal Antibody

Catalog number: 11306-1-AP

Size: 30 µg/150 µl

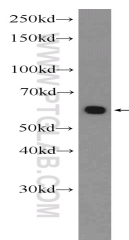
Source: Rabbit

Isotype: IgG

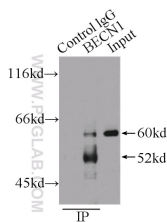
Synonyms:

BECN1; ATG6, Beclin 1, beclin 1, autophagy related, beclin1,

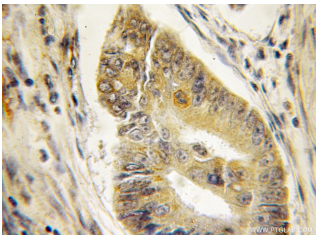
BECN1, GT197, Protein GT197, VPS30



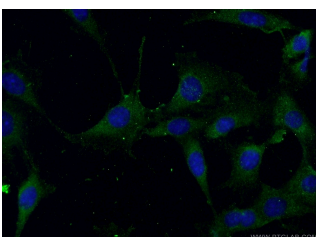
MDA-MB-453s cells were subjected to SDS PAGE followed by western blot with 11306-1-AP (Beclin 1 Antibody) at dilution of 1:1000



IP Result of anti-Beclin 1 (IP:11306-1-AP, 3µg; Detection:11306-1-AP 1:500) with HeLa cells lysate 1200µg.



Immunohistochemical of paraffin-embedded human colon cancer using 11306-1-AP (Beclin 1 antibody) at dilution of 1:50 (under 10x lens)



Background

Beclin-1 (BECN1), also known as ATG6 or VPS30, has a central role in autophagy, a process of programmed cell survival, which is increased during periods of cell stress and extinguished during the cell cycle. Beclin-1, may play a role in antiviral host defense. It protects against infection by a neurovirulent strain of Sindbis virus. Beclin-1 participates in the regulation of autophagy and has an important role in development, tumorigenesis, and neurodegeneration. A progressively reduced Beclin-1 expression is reported to correlate with the primary tumor growth of squamous cell carcinoma and adenocarcinoma of the lung. Caspase-mediated cleavage of Beclin 1 promotes crosstalk between apoptosis and autophagy.

Applications

Tested applications:

ELISA, IHC, IP, WB, IF

Cited applications:

IF, IHC, WB

Species specificity:

Human, Mouse, Rat; other species not tested.

Cited species:

Cyprinus carpio, human, mouse, rat

Calculated Beclin 1 MW:

52 kDa

Observed Beclin 1 MW:

60 kDa

Positive WB detected in

MDA-MB-453s cells, A431 cells, HEK-293 cells, HeLa cells, HT-1080 cells, human placenta tissue, L02 cells, mouse brain tissue, NIH/3T3 cells, PC-3 cells, Raji cells, rat brain tissue

Positive IP detected in

HeLa cells

Positive IHC detected in

Human colon cancer tissue

Positive IF detected in

NIH/3T3 cells

Recommended dilution:

WB: 1:500-1:5000

IP: 1:200-1:2000

IHC: 1:20-1:200

IF: 1:20-1:200

Application key: WB = Western blotting, IHC = Immunohistochemistry, IF = Immunofluorescence, IP = Immunoprecipitation

Immunogen information

Immunogen:

Ag1843

GenBank accession number:

BC010276

Gene ID (NCBI):

8678

Full name:

Beclin 1, autophagy related

Product information

Purification method:

Antigen affinity purification

Storage:

PBS with 0.1% sodium azide and 50% glycerol pH 7.3. Store at -20°C.

**Immunofluorescent analysis
of NIH/3T3 cells using 11306-
1-AP (Beclin 1 Antibody) at
dilution of 1:50 and Alexa
Fluor 488-conjugated
AffiniPure Goat Anti-Rabbit
IgG(H+L)**