

## RABL3 Polyclonal Antibody

Catalog number: 11916-1-AP

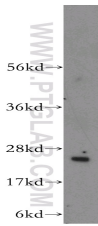
Size: 20 µg/150 µl

Source: Rabbit

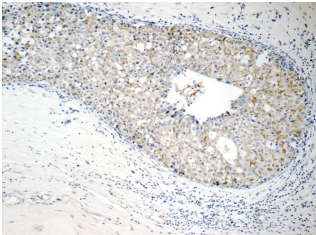
Isotype: IgG

Synonyms:

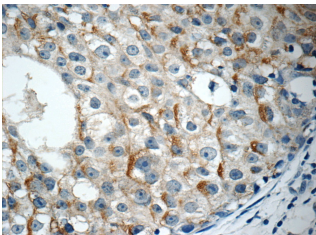
RABL3; Rab like protein 3,  
RABL3



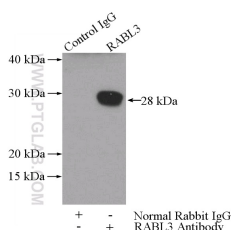
human lung tissue were subjected to SDS PAGE followed by western blot with 11916-1-AP(RABL3 antibody) at dilution of 1:300



Immunohistochemistry of paraffin-embedded human breast cancer tissue slide using 11916-1-AP( RABL3 Antibody) at dilution of 1:50 (under 10x lens)



Immunohistochemistry of paraffin-embedded human breast cancer tissue slide using 11916-1-AP( RABL3 Antibody) at dilution of 1:50 (under 40x lens)



IP Result of anti-RABL3

(IP:11916-1-AP, 3µg;

### Applications

Tested applications:	ELISA, WB, IHC, IP
Cited applications:	WB
Species specificity:	Human, Mouse, Rat; other species not tested.
Cited species:	Human
Calculated RABL3 MW:	236aa, 26 kDa
Observed RABL3 MW:	26 kDa
Positive WB detected in	Human lung tissue, human brain tissue, mouse brain tissue
Positive IP detected in	Mouse lung tissue
Positive IHC detected in	Human breast cancer tissue, human cervical cancer tissue, human kidney tissue, human liver cancer tissue
Recommended dilution:	WB: 1:200-1:2000 IP: 1:200-1:1000 IHC: 1:20-1:200

Application key: WB = Western blotting, IHC = Immunohistochemistry, IF = Immunofluorescence, IP = Immunoprecipitation

### Immunogen information

Immunogen:	Ag2531
GenBank accession number:	BC020832
Gene ID (NCBI):	285282
Full name:	RAB, member of RAS oncogene family-like 3

### Product information

Purification method:	Antigen affinity purification
Storage:	PBS with 0.1% sodium azide and 50% glycerol pH 7.3. Store at -20°C.

Detection:11916-1-AP 1:300)  
with mouse lung tissue lysate  
4000ug.