

Cyclophilin B Polyclonal Antibody

Catalog number: 11607-1-AP

Size: 29 µg/150 µl

Source: Rabbit

Isotype: IgG

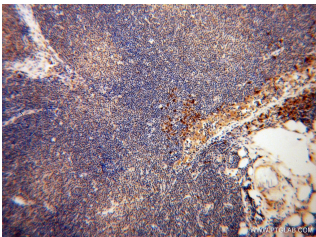
Synonyms:

PPIB; Cyclophilin B, CYP S1,

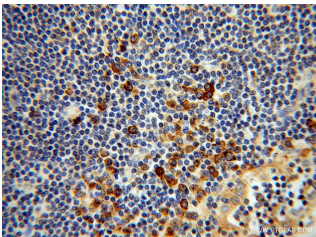
CYPB, PPIase B, PPIB,

Rotamase B, S cyclophilin,

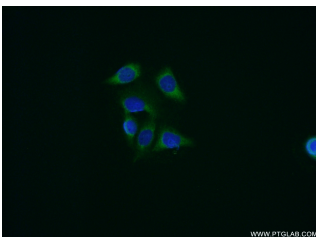
SCYLP



Immunohistochemical of paraffin-embedded human lymphoma using 11607-1-AP(PPIB antibody) at dilution of 1:100 (under 10x lens)



Immunohistochemical of paraffin-embedded human lymphoma using 11607-1-AP(PPIB antibody) at dilution of 1:100 (under 40x lens)



Immunofluorescent analysis of HeLa cells using 11607-1-AP(PPIB Antibody) at dilution of 1:50 and Alexa Fluor 488-conjugated AffiniPure Goat Anti-Rabbit IgG(H+L)

Background

PPIB, also named as CYPB, SCYLP, PPIase B and CYP-S1, belongs to the cyclophilin-type PPIase family and PPIase B subfamily. PPIases accelerate the folding of proteins. It catalyzes the cis-trans isomerization of proline imidic peptide bonds in oligopeptides. PPIB is secreted in biological fluids such as blood or milk and binds to a specific receptor present on the human lymphoblastic cell line Jurkat and on human peripheral blood lymphocytes.

Applications

Tested applications:	ELISA, IHC, WB, IF
Cited applications:	IF, IHC, WB
Species specificity:	Human, Mouse; other species not tested.
Cited species:	Human, monkey, mouse
Calculated Cyclophilin B MW:	216aa, 24 kDa
Observed Cyclophilin B MW:	24 kDa
Positive WB detected in	HeLa cells, HepG2 cells, human skin tissue, mouse liver tissue, NIH/3T3 cells, Raji cells, U-937 cells
Positive IHC detected in	Human lymphoma tissue, human gliomas tissue, human pancreas cancer tissue
Positive IF detected in	HeLa cells
Recommended dilution:	WB: 1:500-1:5000 IHC: 1:20-1:200 IF: 1:20-1:200

Application key: WB = Western blotting, IHC = Immunohistochemistry, IF = Immunofluorescence, IP = Immunoprecipitation

Immunogen information

Immunogen:	Ag2161
GenBank accession number:	BC032138
Gene ID (NCBI):	5479
Full name:	Peptidylprolyl isomerase B (cyclophilin B)

Product information

Purification method:	Antigen affinity purification
Storage:	PBS with 0.1% sodium azide and 50% glycerol pH 7.3. Store at -20°C.