

SSR4 Polyclonal Antibody

Catalog number: 11655-2-AP

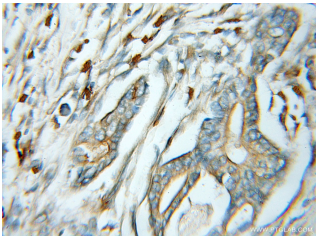
Size: 30 µg/150 µl

Source: Rabbit

Isotype: IgG

Synonyms:

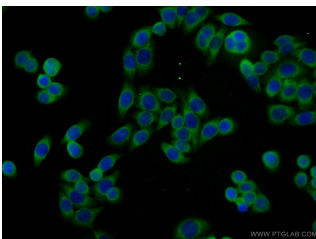
SSR4; SSR delta, SSR4, TRAP delta, TRAPD



Immunohistochemical of paraffin-embedded human pancreas cancer using 11655-2-AP (SSR4 antibody) at dilution of 1:50 (under 10x lens)



HeLa cells were subjected to SDS PAGE followed by western blot with 11655-2-AP (SSR4 antibody) at dilution of 1:500



Immunofluorescent analysis of HeLa cells using 11655-2-AP (SSR4 Antibody) at dilution of 1:25 and Alexa Fluor 488-conjugated AffiniPure Goat Anti-Rabbit IgG(H+L)

Background

Signal sequence receptor subunit delta (SSR4, or TRAPD) gene encodes the translocon-associated proteins subunit delta, which is about 19-kDa and is located at endoplasmic reticulum (ER) membrane, the translocon-associated proteins complex functions to bind calcium to the ER membrane and thereby regulate the retention of ER resident proteins. TRAP-delta can form heterotetramer with other TRAP homolog TRAP-alpha, TRAP-beta and TRAP-gamma.

Applications

Tested applications:	ELISA, IHC, WB, IF
Species specificity:	Human; other species not tested.
Calculated SSR4 MW:	173aa, 19 kDa
Observed SSR4 MW:	19kd
Positive WB detected in	HeLa cells, human placenta tissue
Positive IHC detected in	Human pancreas cancer tissue
Positive IF detected in	HeLa cells
Recommended dilution:	WB: 1:200-1:2000
	IHC: 1:20-1:200
	IF: 1:10-1:100

Application key: WB = Western blotting, IHC = Immunohistochemistry, IF = Immunofluorescence, IP = Immunoprecipitation

Immunogen information

Immunogen:	Ag2250
GenBank accession number:	BC003371
Gene ID (NCBI):	6748
Full name:	Signal sequence receptor, delta (translocon-associated protein delta)

Product information

Purification method:	Antigen affinity purification
Storage:	PBS with 0.1% sodium azide and 50% glycerol pH 7.3. Store at -20°C.