

p65; RELA Polyclonal Antibody

Catalog number: 10745-1-AP

Size: 78 µg/150 µl

Source: Rabbit

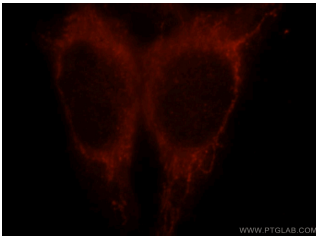
Isotype: IgG

Synonyms:

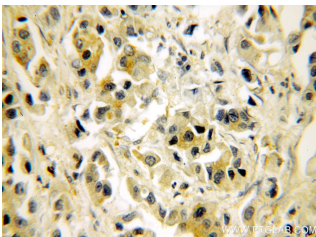
RELA; NFKB 3, NFKB p65,

NFKB3, p65, RELA,

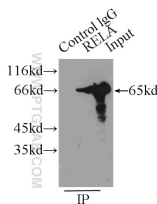
Transcription factor p65



Immunofluorescent analysis of HepG2 cells, using RELA antibody 10745-1-AP at 1:25 dilution and Rhodamine-labeled goat anti-rabbit IgG (red).



Immunohistochemical of paraffin-embedded human breast cancer using 10745-1-AP (p65 antibody) at dilution of 1:50 (under 40x lens)



IP Result of anti-p65 (IP:10745-1-AP, 3µg; Detection:10745-1-AP 1:1000) with HeLa cells lysate 5000µg.

Background

Nuclear factor κ B (NF-κB) is a sequence-specific DNA-binding protein complex which regulates the expression of viral genomes, including the human immunodeficiency virus, and a variety of cellular genes, particularly those involved in immune and inflammatory responses. The members of the NF-κB family in mammalian cells include the proto-oncogene c-Rel, p50/p105 (NFκB1), p65 (RelA), p52/p100 (NFκB2), and RelB. All of these proteins share a conserved 300-amino acid region known as the Rel homology domain which is responsible for DNA binding, dimerization, and nuclear translocation of NF-κB. The p65 subunit is a major component of NF-κB complexes and is responsible for trans-activation. NF-κappa-B heterodimeric p65-p50 and p65-c-Rel complexes are transcriptional activators. The NF-κappa-B p65-p65 complex appears to be involved in invasion-mediated activation of IL-8 expression. The inhibitory effect of I-κappa-B upon NF-κappa-B the cytoplasm is exerted primarily through the interaction with p65. p65 shows a weak DNA-binding site which could contribute directly to DNA binding in the NF-κappa-B complex. It associates with chromatin at the NF-κappa-B promoter region via association with DDX1. This antibody is a rabbit polyclonal antibody raised against residues near the N terminus of human RELA.

Applications

Tested applications:	ELISA, IHC, IF, IP, WB, FC
Cited applications:	IF, IHC, IP, WB
Species specificity:	Human, Mouse, Rat, Pig; other species not tested.
Cited species:	Human, mouse, rat
Calculated p65; RELA MW:	65 kDa
Observed p65; RELA MW:	65 kDa
Positive WB detected in	HeLa cells, A431 cells, HEK-293 cells, Jurkat cells, K-562 cells, MCF7 cells, mouse lung tissue, NIH/3T3 cells, pig liver tissue, rat lung tissue
Positive IP detected in	HeLa cells
Positive IHC detected in	Human breast cancer tissue, human liver cancer tissue, human stomach tissue
Positive IF detected in	HepG2 cells
Positive FC detected in	HeLa cells
Recommended dilution:	WB: 1:500-1:5000 IP: 1:500-1:5000 IHC: 1:20-1:200 IF: 1:10-1:100 FC: N/A

Application key: WB = Western blotting, IHC = Immunohistochemistry, IF = Immunofluorescence, IP = Immunoprecipitation

Immunogen information

Immunogen:	Ag1199
GenBank accession number:	BC011603
Gene ID (NCBI):	5970
Full name:	V-rel reticuloendotheliosis viral oncogene homolog A (avian)

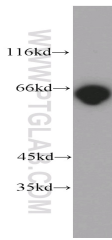
Product information

Purification method:

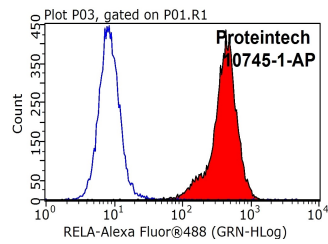
Antigen affinity purification

Storage:

PBS with 0.1% sodium azide and 50% glycerol pH 7.3. Store at -20°C.



HeLa cells were subjected to SDS PAGE followed by western blot with 10745-1-AP (p65 antibody) at dilution of 1:1000



1X10⁶ HeLa cells were stained with 0.2ug p65; RELA antibody (10745-1-AP, red) and control antibody (blue). Fixed with 90% MeOH blocked with 3% BSA (30 min). Alexa Fluor 488-conjugated AffiniPure Goat Anti-Rabbit IgG(H+L) with dilution 1:1000.